

Trombone 1

Contes d'Espagne, Op. 47

1. Cordoue en fête

Turina/Johnson

Allegro moderato

8 **f** 5 **mf**

21 **Vivo** 3

31 3 47

83 **cedez** **Tempo** **cedez** **Allegro Moderato**
2 8 2 9 **f**

105 **Vivo** 11 7 **mp** **f**

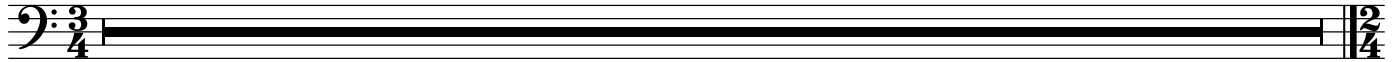
130 3 4

2. Chansons dans le nuit

144 **Andante**

TACET

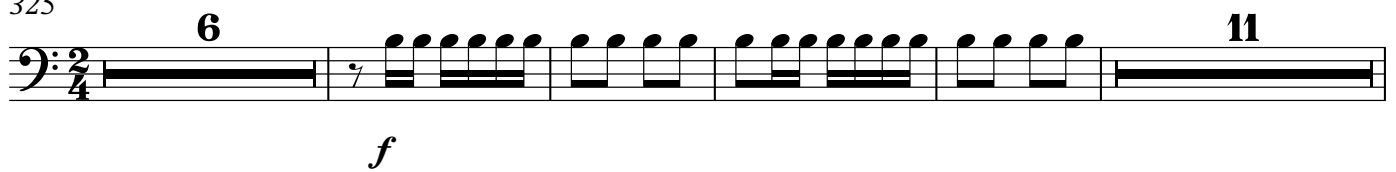
3. Chanson mauresque

242 **Allegro****TACET**

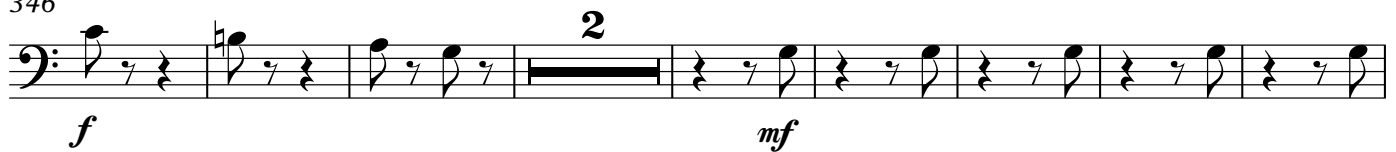
4. Les buveurs de manzanilla

Allegretto ritmico

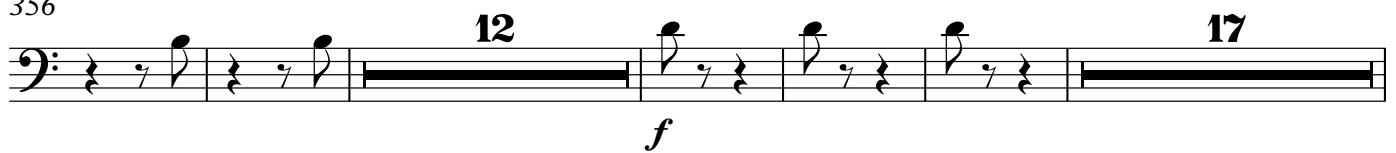
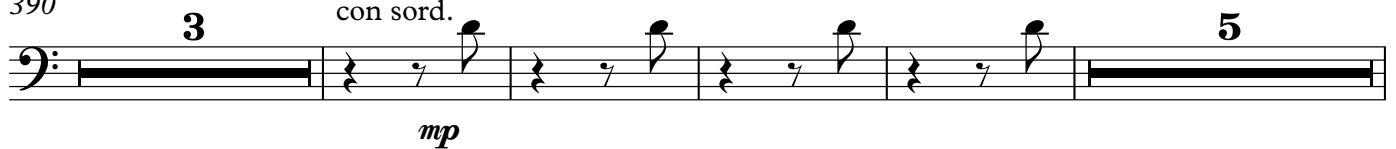
325



346



356

390 **rall.****Andantino**
con sord.

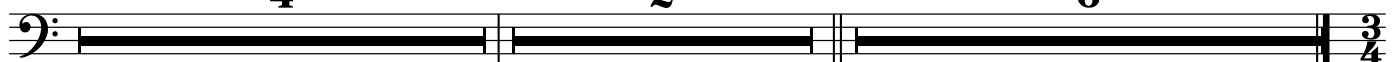
402

409 **cedez un peu a peu**
4**rall.**

2

Allegro vivo

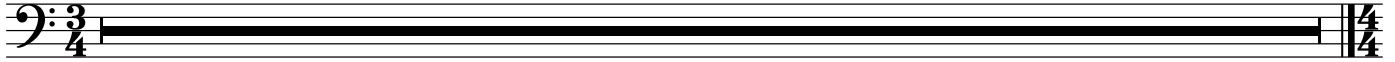
6



5. Promenade

421 **Allegro**

TACET



6. La Mosque

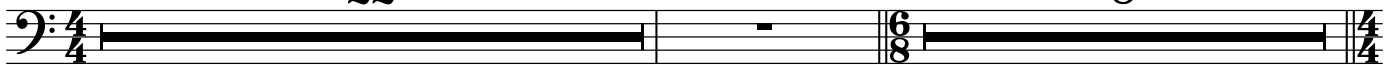
530 **Lento**

22

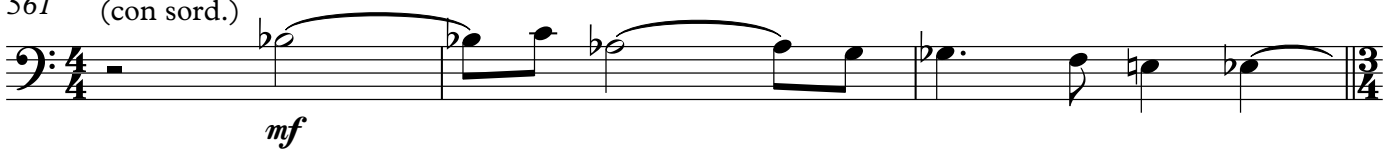
cedez

Andantino

8



561 (con sord.)



564

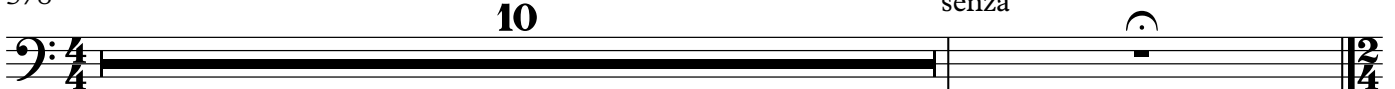
9



578

10

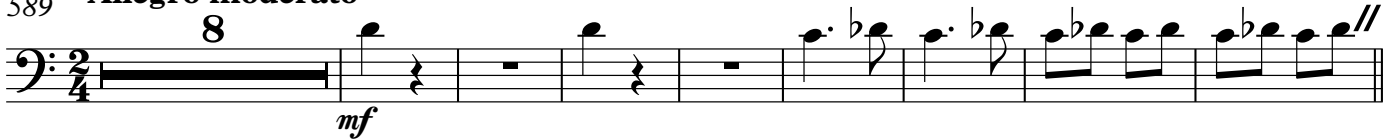
senza



7. Tournai chavaleresque

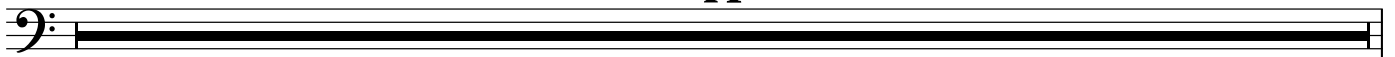
589 **Allegro moderato**

8



605 **Moderato**

14



619

mf

4

4

634

ff

23

21

681

Moderato quasi andantino

f

5

f

3

695

rall.

Andante

f

3

Trombone 2

Contes d'Espagne, Op. 47

1. Cordoue en fete

Turina/Johnson

Allegro moderato

8 **f** 5 **mf**

21 **Vivo** 3

31 3 47

83 **cedez** 2 **Tempo** 8 **cedez** 2 **Allegro Moderato** 6 **f**

105 **Vivo** 11 **mp** 5 **f**

129 3 4

2. Chansons dans le nuit

144 **Andante**

TACET

3. Chanson mauresque

242 **Allegro****TACET**

4. Les buveurs de manzanilla

325 **Allegretto ritmico****6****11**

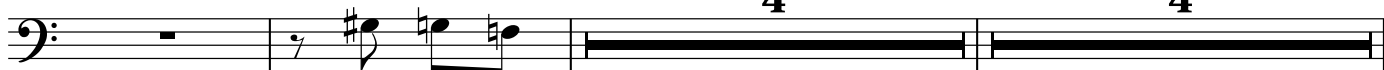
346

2

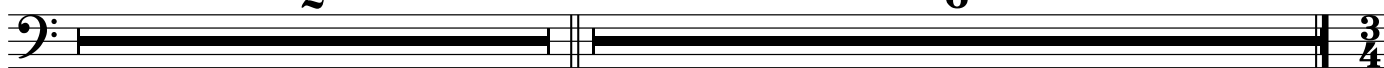
356

12**17**390 **rall.****Andantino**
con sord.**3****5**

403

4**cedez un peu a peu****4**

413

rall.**Allegro vivo**
senza**2****6**

5. Promenade

421 Allegro

TACET



6. La Mosque

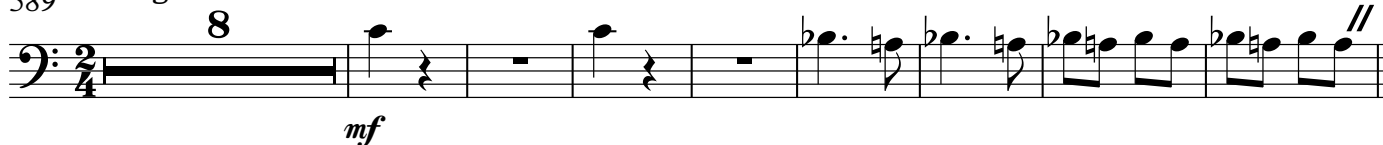
530 Lento

TACET

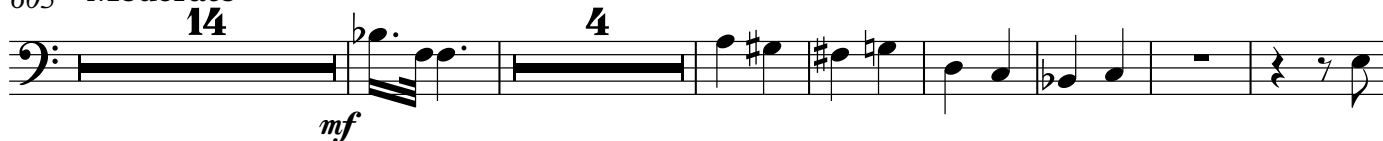


7. Tournai chavaleresque

589 Allegro moderato



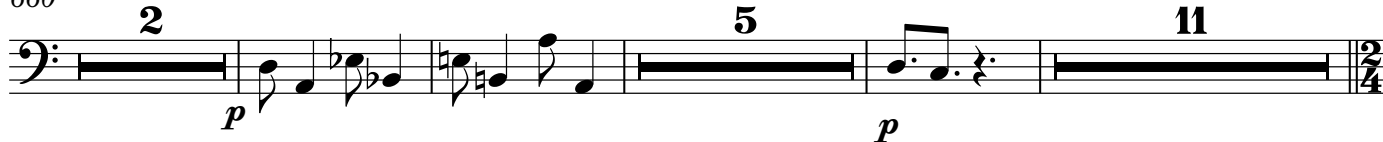
605 Moderato



630



660



681 Moderato quasi andantino



695



Bass Trombone

Contes d'Espagne, Op. 47

1. Cordoue en fete

Turina/Johnson

Allegro moderato
8 13
f

23 **Vivo**
f 3

32 3 47 *cedez* 2

85 **Tempo** 8 *cedez* 2 **Allegro Moderato** 6 *f*

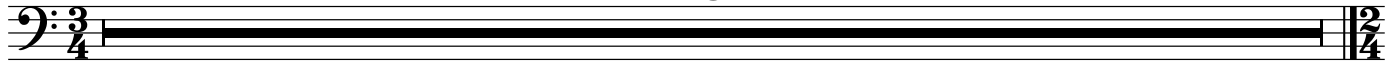
105 **Vivo** 11 *mp* 5 *f*

129 3 4

2. Chansons dans le nuit

144 **Andante** **TACET**

3. Chanson mauresque

242 **Allegro****TACET**

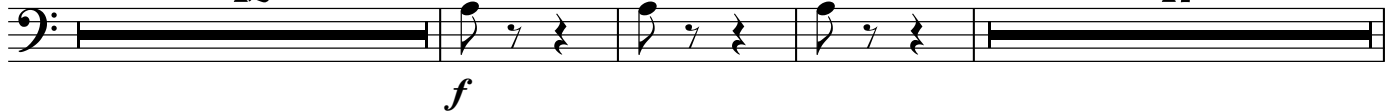
4. Les buveurs de manzanilla

325 **Allegretto ritmico****6****15**

351



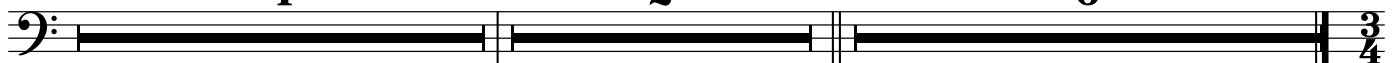
358

12**17**390 **rall.****Andantino**
con sord.**3****5**

402

4409 **cedez un peu a peu** **rall.****Allegro vivo****4****2****6**

senza



5. Promenade

421 Allegro

TACET



6. La Mosque

530 Lento

TACET

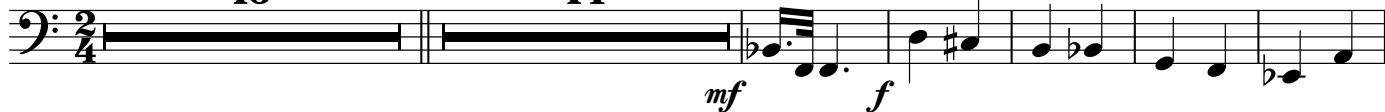


7. Tournai chavaleresque

589 Allegro moderato Moderato

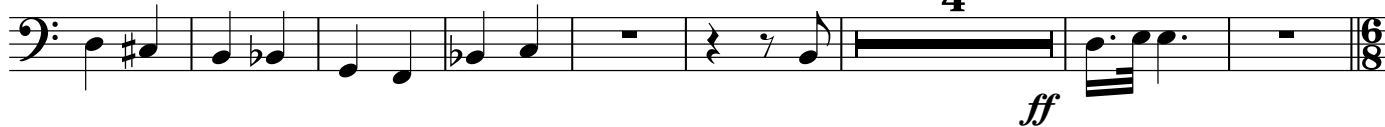
16

14



624

4



636

21

2



662

5

11



681 Moderato quasi andantino

5



695

rall.

Andante

3



Tuba

Contes d'Espagne, Op. 47

1. Cordoue en fête

Turina/Johnson

Allegro moderato **22** **Vivo** **3**

31 **3** **47**

83 **cedez** **Tempo** **cedez** **Allegro Moderato**
2 **8** **2** **6**

105 **Vivo** **13** **5**

130 **10**

2. Chansons dans le nuit

144 **Andante** **TACET**

3. Chanson mauresque

242 **Allegro** **TACET**

4. Les buveurs de manzanilla

325 **Allegretto ritmico**

6 14

f *mf*

351

358

32 rall. 3 **Andantino**

pp

396

12 cedez un peu a peu 4 rall. 2

415 **Allegro vivo**

6

$\frac{3}{4}$

5. Promenade

421 **Allegro**

TACET

$\frac{3}{4}$ $\frac{4}{4}$

6. La Mosque

530 **Lento** **22** **cedez** **Andantino** **8**

561

564 *mp* **13** **10**

Detailed description: This block contains the musical notation for measures 530 to 563. It starts with a bass clef and a 4/4 time signature. Measure 530 is a whole rest. Measure 531 is a whole rest. Measure 532 is a whole rest. Measure 533 is a whole rest. Measure 534 is a whole rest. Measure 535 is a whole rest. Measure 536 is a whole rest. Measure 537 is a whole rest. Measure 538 is a whole rest. Measure 539 is a whole rest. Measure 540 is a whole rest. Measure 541 is a whole rest. Measure 542 is a whole rest. Measure 543 is a whole rest. Measure 544 is a whole rest. Measure 545 is a whole rest. Measure 546 is a whole rest. Measure 547 is a whole rest. Measure 548 is a whole rest. Measure 549 is a whole rest. Measure 550 is a whole rest. Measure 551 is a whole rest. Measure 552 is a whole rest. Measure 553 is a whole rest. Measure 554 is a whole rest. Measure 555 is a whole rest. Measure 556 is a whole rest. Measure 557 is a whole rest. Measure 558 is a whole rest. Measure 559 is a whole rest. Measure 560 is a whole rest. Measure 561 is a whole rest. Measure 562 is a whole rest. Measure 563 is a whole rest. The tempo changes from Lento to Andantino at measure 530. The time signature changes from 4/4 to 6/8 at measure 530. The time signature changes from 6/8 to 4/4 at measure 564. The time signature changes from 4/4 to 3/4 at measure 561. The time signature changes from 3/4 to 2/4 at measure 564. The dynamic marking *mp* is present at measure 564.

7. Tournai chavaleresque

589 **Allegro moderato** **Moderato**

16 **14**

623 **2** **4** **ff**

636 **23** **21**

681 **Moderato quasi andantino** **9** **3** **3**

698 **rall.** **Andante**

f *f*

Detailed description: This block contains the musical notation for measures 589 to 680. It starts with a bass clef and a 2/4 time signature. Measure 589 is a whole rest. Measure 590 is a whole rest. Measure 591 is a whole rest. Measure 592 is a whole rest. Measure 593 is a whole rest. Measure 594 is a whole rest. Measure 595 is a whole rest. Measure 596 is a whole rest. Measure 597 is a whole rest. Measure 598 is a whole rest. Measure 599 is a whole rest. Measure 600 is a whole rest. Measure 601 is a whole rest. Measure 602 is a whole rest. Measure 603 is a whole rest. Measure 604 is a whole rest. Measure 605 is a whole rest. Measure 606 is a whole rest. Measure 607 is a whole rest. Measure 608 is a whole rest. Measure 609 is a whole rest. Measure 610 is a whole rest. Measure 611 is a whole rest. Measure 612 is a whole rest. Measure 613 is a whole rest. Measure 614 is a whole rest. Measure 615 is a whole rest. Measure 616 is a whole rest. Measure 617 is a whole rest. Measure 618 is a whole rest. Measure 619 is a whole rest. Measure 620 is a whole rest. Measure 621 is a whole rest. Measure 622 is a whole rest. Measure 623 is a whole rest. Measure 624 is a whole rest. Measure 625 is a whole rest. Measure 626 is a whole rest. Measure 627 is a whole rest. Measure 628 is a whole rest. Measure 629 is a whole rest. Measure 630 is a whole rest. Measure 631 is a whole rest. Measure 632 is a whole rest. Measure 633 is a whole rest. Measure 634 is a whole rest. Measure 635 is a whole rest. Measure 636 is a whole rest. Measure 637 is a whole rest. Measure 638 is a whole rest. Measure 639 is a whole rest. Measure 640 is a whole rest. Measure 641 is a whole rest. Measure 642 is a whole rest. Measure 643 is a whole rest. Measure 644 is a whole rest. Measure 645 is a whole rest. Measure 646 is a whole rest. Measure 647 is a whole rest. Measure 648 is a whole rest. Measure 649 is a whole rest. Measure 650 is a whole rest. Measure 651 is a whole rest. Measure 652 is a whole rest. Measure 653 is a whole rest. Measure 654 is a whole rest. Measure 655 is a whole rest. Measure 656 is a whole rest. Measure 657 is a whole rest. Measure 658 is a whole rest. Measure 659 is a whole rest. Measure 660 is a whole rest. Measure 661 is a whole rest. Measure 662 is a whole rest. Measure 663 is a whole rest. Measure 664 is a whole rest. Measure 665 is a whole rest. Measure 666 is a whole rest. Measure 667 is a whole rest. Measure 668 is a whole rest. Measure 669 is a whole rest. Measure 670 is a whole rest. Measure 671 is a whole rest. Measure 672 is a whole rest. Measure 673 is a whole rest. Measure 674 is a whole rest. Measure 675 is a whole rest. Measure 676 is a whole rest. Measure 677 is a whole rest. Measure 678 is a whole rest. Measure 679 is a whole rest. Measure 680 is a whole rest. The tempo changes from Allegro moderato to Moderato at measure 589. The time signature changes from 2/4 to 6/8 at measure 623. The time signature changes from 6/8 to 2/4 at measure 636. The dynamic marking *mf* is present at measure 589. The dynamic marking *f* is present at measure 600. The dynamic marking *ff* is present at measure 623. The dynamic marking *f* is present at measure 681. The dynamic marking *f* is present at measure 698. The tempo changes from Moderato quasi andantino to Andante at measure 698. The time signature changes from 2/4 to 3/4 at measure 681. The time signature changes from 3/4 to 2/4 at measure 698. The dynamic marking *f* is present at measure 681. The dynamic marking *f* is present at measure 698.