



SACRED SONGS

By

E. S. HOSMER

All my heart this night rejoices (Christmas)	NET .40
HIGH VOICE, IN D	
Saviour, comfort me	.40
LOW VOICE, IN A \flat	
There's a friend for little children (Children's Day)	.40
HIGH VOICE, IN C	
Upheld	.40
MEDIUM VOICE, IN G LOW VOICE, IN E \flat	
— We bless Thee for Thy peace, O God	.40
<u>HIGH VOICE, IN D\flat</u> LOW VOICE, IN B \flat	



BOSTON: OLIVER DITSON COMPANY

New York: Chas. H. Ditson & Co. Chicago: Lyon & Healy, Inc.

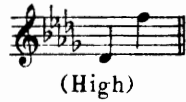
London: Winthrop Rogers, Ltd.

MADE IN U. S. A.



WE BLESS THEE FOR THY PEACE, O GOD

Anonymous



E.S. HOSMER

Moderato *mf*

VOICE: We bless Thee for Thy

PIANO or ORGAN: *mf*

espressivo

peace, O God, — Deep as th'un-fath-om'd sea, —

colla voce

cresc.

Which falls like sun-shine on the road Of those who trust in Thee.

mf *mp*

We ask not, Fa-ther, for re-po-se Which comes from out-ward rest,

mf *p dolce*

If we may have thro' all life's woes Thy peace,— Thy peace with-in our

poco rit. *mf a tempo*

breast. That peace which

poco rit. *a tempo*

suf - fers and — is strong, Trusts where it

can - not see, Deems not the—

tri - al way too long, But leaves the

end with Thee,— with Thee: That peace which flows se—

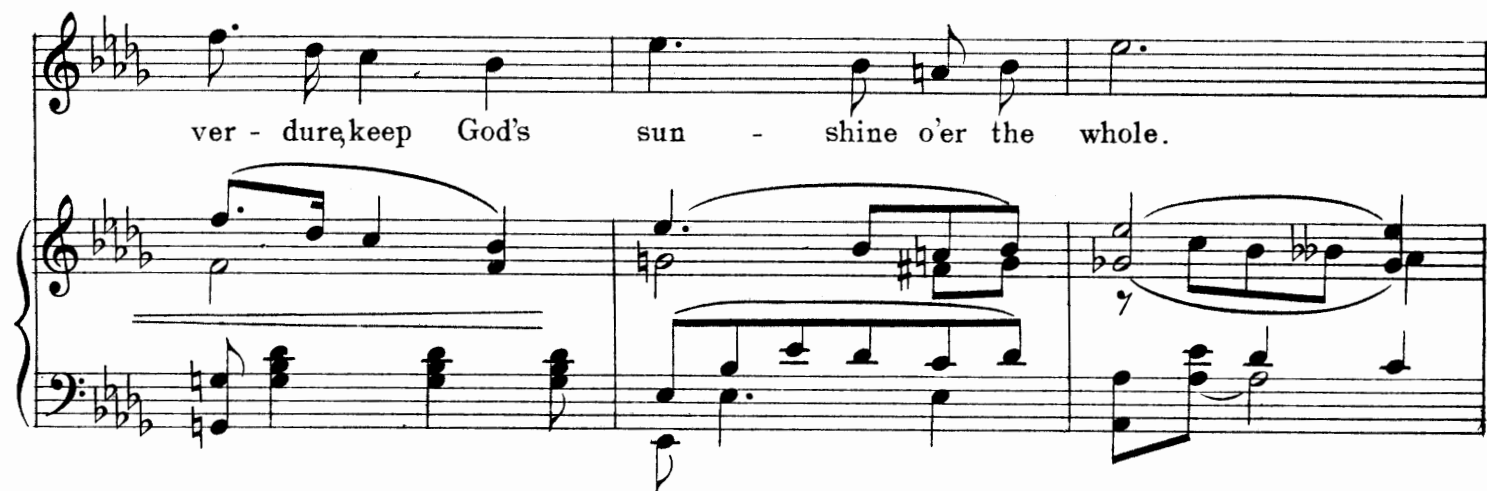
espressivo *mf*

espressivo *mf*

rene and deep, A riv - er in the soul,— Whose banks, a liv - ing

cresc.

ver - dure, keep God's sun - shine o'er the whole.



O Fa - ther, give our hearts this peace, What - e'er the



cresc. - out - ward be, Till all life's dis - ci - pline shall cease



dim. espressivo And we go home - to Thee. *p dim.* A - men.



✠ Sacred Songs ✠

Second Series

		High	Medium	Low	NET
Alain, Albert	Light of those whose dreary dwelling (<i>Lux Mundi</i>)	G♭	E♭		.40
Allen, B. D.	Morning or evening song			B♭	.40
Ambrose, Paul	O come to my heart, Lord Jesus. Op. 26, No. 1	G		E♭	.40
Andrews, Mark	Still will we trust	F		D♭	.40
Armstrong, W. D.	All will be well	G	F		.40
Beethoven, Ludwig van	O what is man. Op. 48, No. 4	C		A	.20
Behrend, A. H.	Come unto me, ye weary	B♭	A♭		.40
Bird, P. Douglas	In the golden evening		D	B♭	.40
Bryning, P. L.	Send down Thy blessing	E♭			.40
Burdett, George A.	Lord, Thy glory fills the Heaven	E♭	C		.40
Campbell, Bradford	Guide me, O thou great Jehovah	B♭		G	.40
Carvel, Robert	O Lamb of God, I come. Op. 4, No. 1a	D♭		B	.40
Cole, Rossetter G.	Saviour, like a Shepherd lead us		A♭		.40
Custance, Arthur F. M.	Comforter, The	D♭	B♭		.40
do.	Still, still with Thee	D♭		B♭	.40
Florida, Pietro	Entreat me not to leave thee (Song of Ruth)	A♭	F		.40
Frey, Adolf	Incline your ear	E	C		.40
Gaines, Samuel Richards	Trustingly, trustingly		C		.40
Galbraith, J. Lamont	Beyond the moaning of earth's restless sea	F	E♭		.40
Geibel, Adam	The Shepherd		C	A♭	.40
Grunn, Homer	He that overcometh	F	D		.40
Hamilton, Clarence G.	Heavenly things revealed	A	F		.40
Hammond, William G.	O Jesus, every thought of Thee	B♭	G		.40
Harker, F. Flaxington	Easter triumph	D	B♭		.40
do.	God, that madest earth and Heaven		E	C	.40
Haydn, Franz Joseph	O Love Divine	E			.20
Henrich, C. W.	The shadows lengthen	A♭		F	.40
Huerter, Charles	Far from my Heavenly home	D♭		B♭	.40
Jackson, F. L.	Art thou weary?	B♭	A♭	F	.40
Johnson, Noel	There is a green hill far away. (Arranged by Heinrich Kiehl)	G	F		.40
Joyce, Florence B.	The passing day	G		E♭	.40
Kinder, Ralph	Refuge Divine		B♭		.40
Lansing, A. W.	I will praise Thee, O God	C	A		.40
Laubin, Edward F.	I heard the voice of Jesus say	G		E♭	.40
Lemare, Edwin H.	I will lift up mine eyes	A			.40
Ludewuehl, J. P.	Now the day is over	D		B♭	.40

Boston: Oliver Ditson Company

New York: Chas. H. Ditson & Co. Chicago: Lyon & Healy

Order of your local dealer