

Maryafreund

Anton Webern

Lateinische Lieder

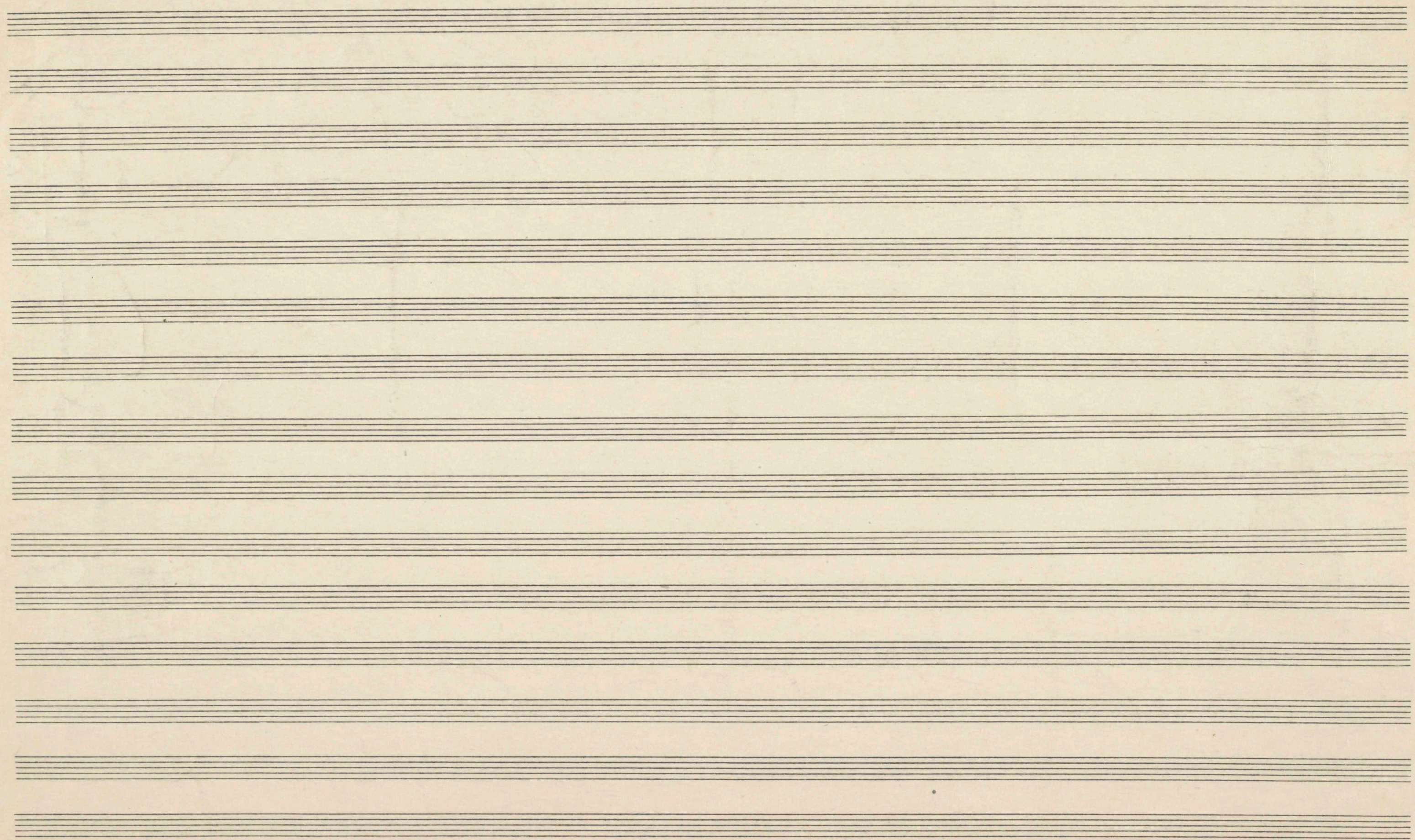
für

Gesang, Klarinette u. Bass-Klarinette

Mödling Neusiedlerstr. 58









T.

Ruhig (♩ = 72)

Anton Webern

10 3 5

*Dor-mi Je-su ma-ter ri-det, quae tam dul-cem som-num vi-det*

*zögernd*

*mp* 3 3 10 10

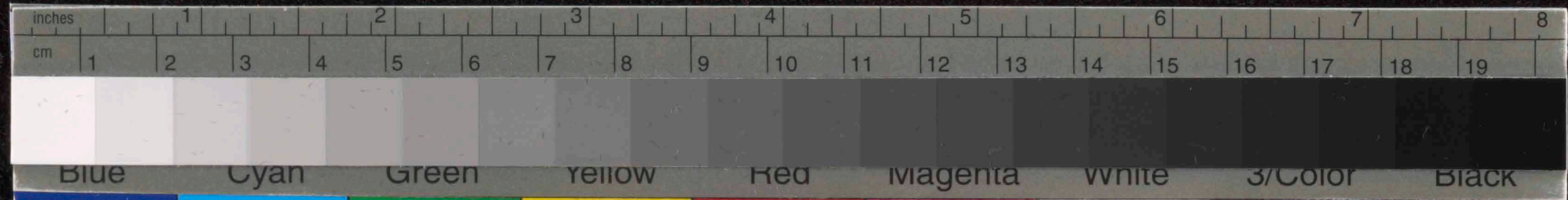
*dor-mi Je-su blan-du-le. Si non dor-mis ma-ter plo-rat in-ter fi-la*

*zögernd* *pp* 10 10 3

*morendo*

*can-tans o-rat, blan-de ve-ni som-nu-le.*

10





Bewegt (♩ = ca 100)

II.

molto rit. a tempo (ruhig)

Gesang

Cru- xi fi- de- lis in- ter om- nes ar- bor u- na no- bi- lis: mul- la sil- va

Klarinette

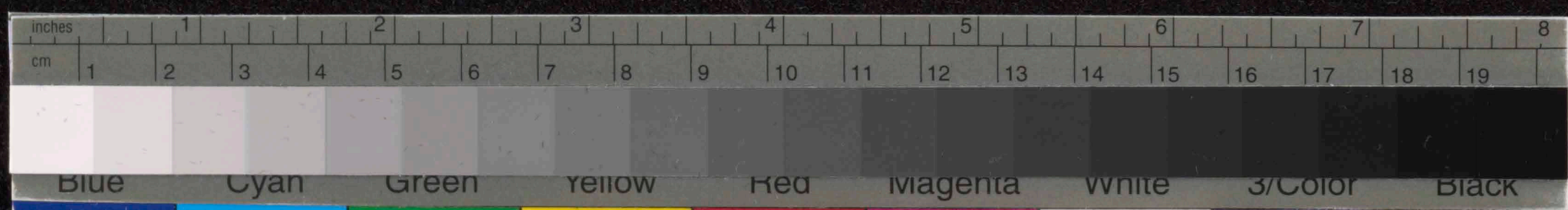
Barb-Klarinette

*drängend* *sehr bewegt* (♩ = 126) *rit. ... sehr ruhig* (♩ = 92)

ta- lem pro- fert fron- de flore ger- mi- ne. Dul- ce lignum, dul- ces cla- vos

*pacif.*

dul- ce son- dus sus- ti- net.





III.

Sehr bewegt (♩ = ca 84)

*molto rit* - - - - - tempo

*ppoco rit* - - - tempo

Sesang

Handwritten musical notation for the vocal line. It features a treble clef, a 2/4 time signature, and a key signature of one sharp (F#). The melody includes various rhythmic values such as eighth and sixteenth notes, and rests. There are dynamic markings like *f* and *mf*, and articulation marks like accents and slurs. A red box with the number '5' is drawn around a specific note. The lyrics are: "Is- per- ges me, Do- mi- ne, hy- so- so, et mun- da- bor. La-

Barb-Klarinette

Handwritten musical notation for the bass clarinet line. It features a bass clef, a 2/4 time signature, and a key signature of one sharp (F#). The accompaniment includes eighth and sixteenth notes, and rests. There are dynamic markings like *f* and *mf*, and articulation marks like accents and slurs.

*ppoco sostenuto* - - - - - tempo

Handwritten musical notation for the vocal line. It features a treble clef, a 3/4 time signature, and a key signature of one sharp (F#). The melody includes various rhythmic values such as eighth and sixteenth notes, and rests. There are dynamic markings like *f* and *mf*, and articulation marks like accents and slurs. A red box with the number '10' is drawn around a specific note. The lyrics are: "ra- bis me, et su- per ri- vem de- al- ba- bor. Mi- se- re- re De- i me- i, se- cun- dum

Handwritten musical notation for the bass clarinet line. It features a bass clef, a 3/4 time signature, and a key signature of one sharp (F#). The accompaniment includes eighth and sixteenth notes, and rests. There are dynamic markings like *f* and *mf*, and articulation marks like accents and slurs.

*ppoco rit.* - - - - -

Handwritten musical notation for the vocal line. It features a treble clef, a 2/4 time signature, and a key signature of one sharp (F#). The melody includes various rhythmic values such as eighth and sixteenth notes, and rests. There are dynamic markings like *f* and *mf*, and articulation marks like accents and slurs. A red box with the number '10' is drawn around a specific note. The lyrics are: "mag- nam mi- se- ri- cor- di- am tu- am

Handwritten musical notation for the bass clarinet line. It features a bass clef, a 2/4 time signature, and a key signature of one sharp (F#). The accompaniment includes eighth and sixteenth notes, and rests. There are dynamic markings like *f* and *mf*, and articulation marks like accents and slurs.





4

