

Antonio Salieri (1750 - 1825)

SINFONIA in RE

"Giorno onomastico,"
per orchestra da camera

Revisione di RENZO SABATINI

TROMBA II.
in Do

Allegro, quasi Presto

The musical score for Tromba II in D consists of ten staves of music. The tempo is marked 'Allegro, quasi Presto'. The score begins with a dynamic of *f* (forte) and includes various dynamic markings such as *mf* (mezzo-forte) and *ff* (fortissimo). The music features a variety of rhythmic patterns, including eighth and sixteenth notes, and rests. Measure numbers 5, 10, 15, 20, 25, 30, 35, 40, 45, and 50 are indicated at the beginning of their respective staves. The key signature is one sharp (F#), and the time signature is 2/4.

2

55

60

65

mf

70

f

75

80

f

85

poco sost.

a tempo

90

95

ff

100

105

110

115

120

125

130

Archi.

f

135

ecc.

140

f

mf

145

f

mf

f

150

155

f

160 165 170 175 180 185 190 195

LARGHETTO - TACE

MINUETTO

Non tanto allegro

310

TRIO

340 345 350

4

Allegretto e sempre
l'istesso tempo

355 360 365

370
mp cresc. *f*

375

495 *fl.* 2'

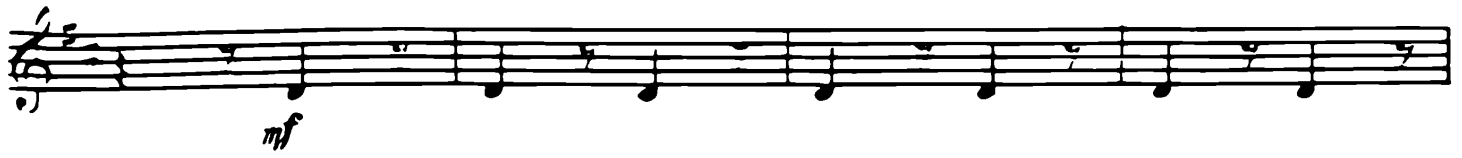
500

505 *mf* *mf*

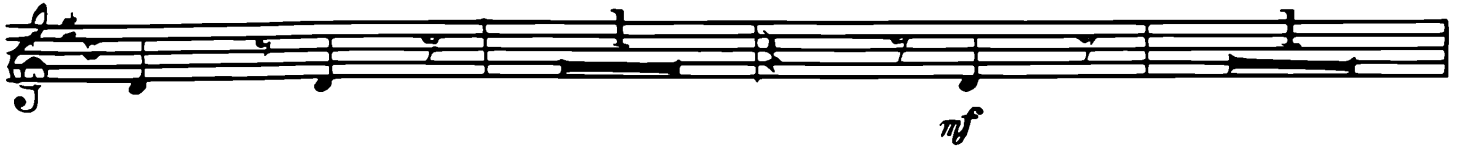
510 *mf* *mf*

515 *mf*

520 *mf*



525

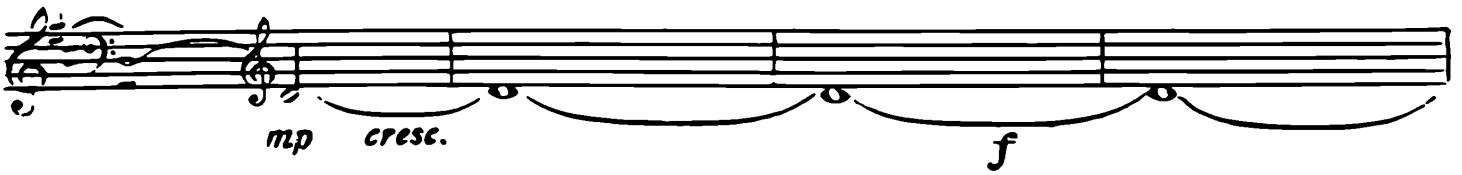


530

535

Fag. I.

540



545



550



555

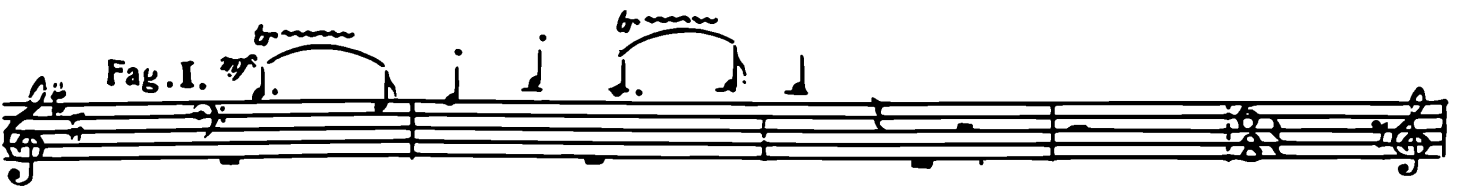
560

a tempo

565



Fag. I.



570

