

Fagotto 3^{no}

Preludio, Corale e Fuga

Op. 10 No. 1 Respighi

Preludio

Lento

Presto

5 20

(1) 8 11

(2) 14

(3)

19 6

(4) 16

Handwritten musical notation for the first system, including a treble clef, a key signature of one sharp (F#), and various notes and rests. A fermata is placed over a note, and the number '8' is written above it. A '3' is written at the end of the line.

Handwritten musical notation for the second system, including a treble clef, a key signature of one sharp (F#), and various notes and rests. A fermata is placed over a note, and the number '12' is written above it. A '3' is written at the end of the line.

Handwritten musical notation for the third system, including a treble clef, a key signature of one sharp (F#), and various notes and rests. A fermata is placed over a note, and the number '8' is written above it. A '3' is written at the end of the line.

Handwritten musical notation for the fourth system, including a treble clef, a key signature of one sharp (F#), and various notes and rests. A fermata is placed over a note, and the number '8' is written above it. A '3' is written at the end of the line.

Corale *Lento*

Handwritten musical notation for the fifth system, including a treble clef, a key signature of one sharp (F#), and various notes and rests. A fermata is placed over a note, and the number '8' is written above it. A '3' is written at the end of the line.

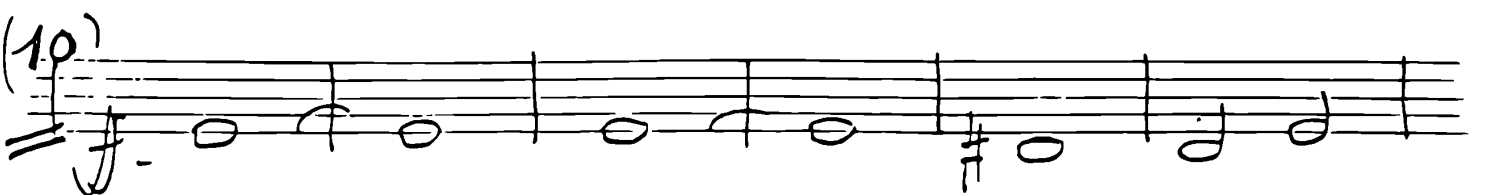
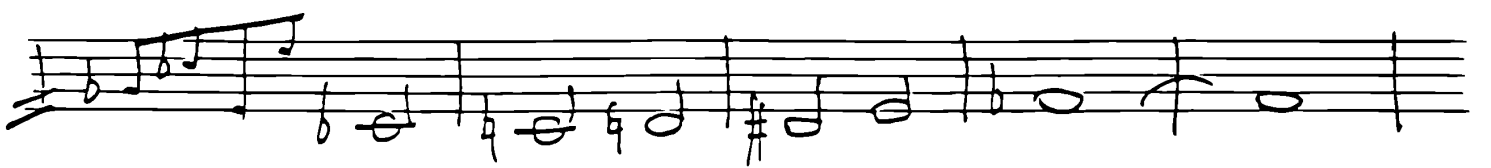
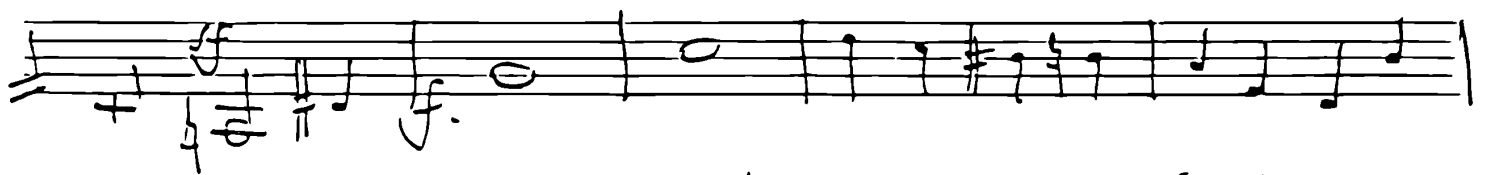
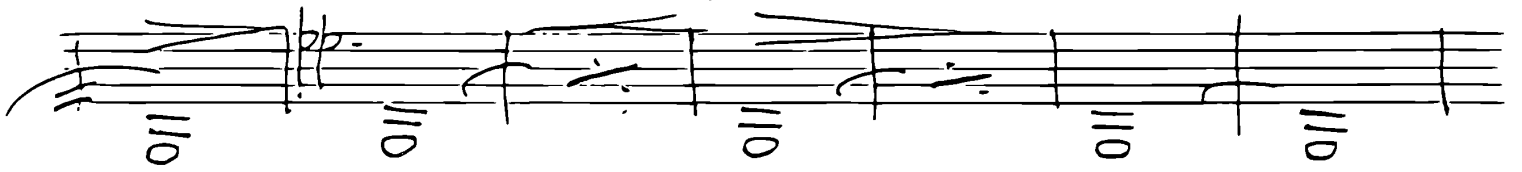
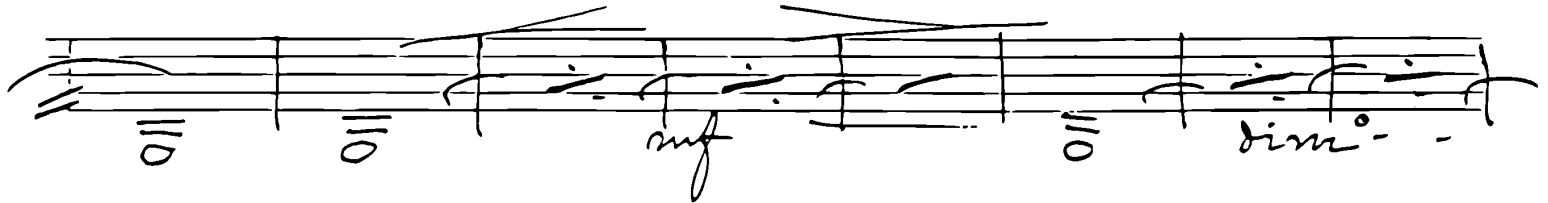
Handwritten musical notation for the sixth system, including a treble clef, a key signature of one sharp (F#), and various notes and rests. A fermata is placed over a note, and the number '8' is written above it. A '3' is written at the end of the line.

Handwritten musical notation for the seventh system, including a treble clef, a key signature of one sharp (F#), and various notes and rests. A fermata is placed over a note, and the number '8' is written above it. A '3' is written at the end of the line.

Handwritten musical notation for the eighth system, including a treble clef, a key signature of one sharp (F#), and various notes and rests. A fermata is placed over a note, and the number '8' is written above it. A '3' is written at the end of the line.

segue

4 *crif.*



Handwritten musical notation on a single staff, featuring a sequence of notes with accents and slurs.

Handwritten musical notation on a single staff, featuring a sequence of notes with slurs.

Handwritten musical notation on a single staff, starting with a heavily scribbled-out section and ending with a double bar line.

Meno mosso (12)

Handwritten musical notation on a single staff, starting with the tempo marking "Meno mosso" and measure number "(12)".

Handwritten musical notation on a single staff, featuring a sequence of notes.

rit. (13)

Handwritten musical notation on a single staff, starting with the tempo marking "rit." and measure number "(13)".

dim. (14)

Handwritten musical notation on a single staff, starting with the dynamic marking "dim." and measure number "(14)", followed by a key signature change to B-flat.

Handwritten musical notation on a single staff, featuring a sequence of notes with slurs.

Handwritten musical notation on a single staff, featuring a sequence of notes with slurs.

1^o Campo (15) *molto soft*

Handwritten musical notation on a single staff, starting with the tempo marking "1^o Campo" and measure number "(15)", followed by the instruction "molto soft".

Segue

6

(15)

Handwritten musical score for measures 15-17. The notation includes treble and bass staves with notes, rests, and dynamic markings such as *mf*, *mf*, *rit.*, and *f*. Measure 15 starts with a treble staff containing a melodic line and a bass staff with chords. Measure 16 continues the melodic line in the treble and has a bass staff with a long note. Measure 17 features a treble staff with a long note and a bass staff with a long note, ending with a double bar line.

Handwritten musical score for measure 16, marked *Presto*. The notation includes treble and bass staves with notes, rests, and dynamic markings such as *f*. The measure is marked with a large '16' above the staff. The treble staff contains a melodic line, and the bass staff contains a long note.

Handwritten musical score for measure 17, continuing the melodic line from the previous measure. The notation includes treble and bass staves with notes and rests.

Handwritten musical score for measure 18, continuing the melodic line from the previous measure. The notation includes treble and bass staves with notes and rests.

Handwritten musical score for measure 18, marked (18). The notation includes treble and bass staves with notes, rests, and dynamic markings such as *p.* and *f.*. The measure is marked with a large '(18)' above the staff. The treble staff contains a melodic line, and the bass staff contains a long note.

Handwritten musical score for measure 19, continuing the melodic line from the previous measure. The notation includes treble and bass staves with notes, rests, and dynamic markings such as *p.* and *mf*.

Handwritten musical score for measure 20, continuing the melodic line from the previous measure. The notation includes treble and bass staves with notes, rests, and dynamic markings such as *rit.* and *rit.*. The measure ends with a double bar line.

Largamente

(19)

(20)

y.s.

