

Fantasia (1)

Violoncello

Henry Purcell
(1658 - 1695)

2

Viol. I

8

13

20

26

33

Quick (Schnell)

39

Viola

44

48

Drag
(Schleppend)

54

Violoncello

Fantasia (2)

2 Viola

9

16

23

Brisk
(Lebhaft)

31

38

41

47

Slow (*Langsam*)

52

60

Fantasia (3)

5 Viola

12

20

28

35 Brisk (Lebhaft)

42

48 Viol. I

55

62

68

Violoncello

Fantasia (4)

14. Juni 1680

Viola

3

1

10

17

24

31

38 *Slow (Langsam)*

47

56 *Quick (Schnell)*

65

73

79 *Slow (Langsam)*

Detailed description: This is a page of a musical score for the Viola part of the Cello section of J.S. Bach's Fantasia in G major, BWV 1026. The score is written in bass clef with a key signature of one flat (F major). It consists of ten staves of music. The first staff begins with a treble clef and a '3' above it, indicating a triplet. The word 'Viola' is written below the first staff. Measure numbers 10, 17, 24, 31, 38, 47, 56, 65, 73, and 79 are placed at the beginning of their respective staves. Performance markings include 'Slow (Langsam)' above measures 38-47 and 'Quick (Schnell)' above measures 56-65. Fingerings are indicated by numbers 1, 2, and 3 above notes. The piece concludes with a double bar line at the end of the final staff.

Fantasia (5)

22. Juni 1680

1 Viol. II *f*

6

11 *f*

17

22

28

Brisk (Lebhaft)

33

37

41

Slow (Langsam)

45

Violoncello

Fantasia (6)

30. Juni 1680

Viol. I

6

12

17

21

Slow (*Langsam*)

25

30

Quick (*Schnell*)

35

41

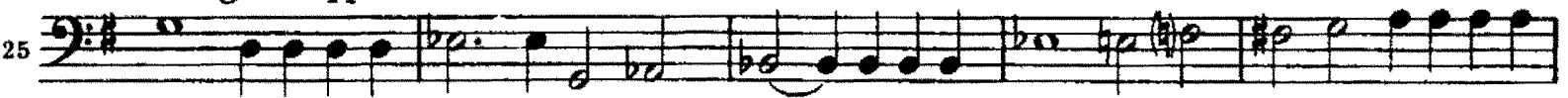
45

Fantasia (7)

19. August 1680



Drag (Schleppend)



Brisk (Lebhaft)

