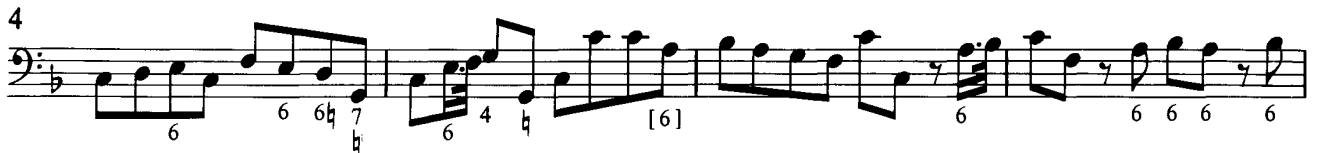


Sonata in F major/F-Dur

(Op. 1 no. 9)

Largo



Allegro



39

[5b] 6[b] 7[b] 6[b] 6 5b 6 6 [7] 6 6 5 [4]

46

6 5 b # 4+ 6 6 5 # 4+ 6 6 5 # 6

53

4 # 6 7 6 6 5 7 6

60

6 [6] 6 6 6 6 6 5 6 5 6

67

5 6 5 6 6 6 6 [6] 6

74

6 6 [6] 6 6 6 7 4 3 6 7 4 3

Affettuoso

6 5 # 6 6 5 # 6

7

6 6 5 6 [6] 4 2 6 6 5 4 3

14

6 5 6 6 5 6 6 5 [6]

21

6 6 5 # 7 # 6 5 6 4 6 5 4 #

Allegro

6 6 6 5 6 6 6 5

8

6 6 [6] [6]

15

[6] [6] [6] 6 6 5

22

6 [4 b] 6 [4 b] 6 4 b

29

6b 6 [b] b 6 6 5

36

6 6 5 # 6 6 5 # 6 6 5 4 #

43

6 6 6 5 6 6 6 5

50

6 5 6

58

[6] [6]

66

6 [6] 6 6 5 6 4 5 3 6 6 5 6 6 5