

Antonio Salieri (1750 - 1825)

SINFONIA in RE

"Giorno onomastico,"
per orchestra da camera

Revisione di RENZO SABATINI

TIMPANI
La-Re(Mi)

Allegro, quasi Presto

5

10

15

20

25

30

35

40

45 50 55 60 65

70

f

75 80

f

85 90 95

100 105 110 115

(Ob.) (fl.)

120 125 130 135 140

Archi ecc. *f*

145

f

150 155

f

160 165 170 175

Trombe *mf*

180 185

f

190 195

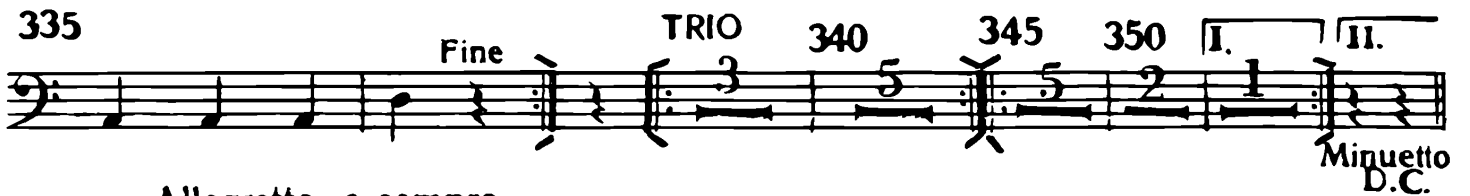
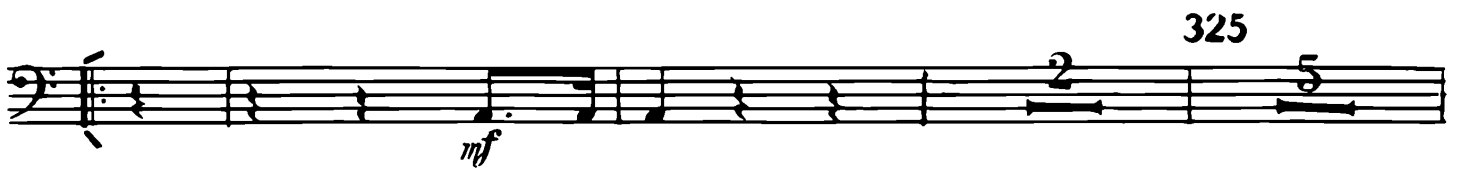
p *f*

LARGHETTO TACE

MINUETTO

Non tanto allegro

310



Allegretto e sempre
l'istesso tempo



Vno.

A single musical staff in treble clef containing a melodic line with various note values and slurs.

540

fl. *mf*

A musical staff in treble clef with a melodic line. The measure number 540 is centered above the staff. The dynamic marking *mf* is placed above the staff.

f

A musical staff in treble clef with a melodic line. The dynamic marking *f* is placed below the staff.

545

A musical staff in bass clef with a melodic line.

550

A musical staff in bass clef with a melodic line.

555

560

A musical staff in bass clef showing triplet markings (3 and 5) over groups of notes.

a tempo

565

A musical staff in bass clef with a melodic line. The tempo marking *a tempo* is above the staff. The measure number 565 is above the staff.

Fag. I. *mf*

A musical staff in bass clef with a melodic line. The dynamic marking *mf* is above the staff. Trill markings (*tr*) are above the staff.

570

ff

A musical staff in bass clef with a melodic line. The dynamic marking *ff* is below the staff.