

Chapultepec

Manuel M. Ponce

I. Primavera

Allto. affettuoso $\text{♩} = 100$ 1 8 2 3 3 4

20 4 **Più animato** $\text{♩} = 88$
a 2
f *f*

24 5 **Animando sempre** *cresc. e più stretto* **rall.** **Lentamente**
a 2
ff

36 6 **Andante** 7
p *f*

45 **Più mosso** 8 **Andante** 9 **Più animato**
p *f*

59 10 **Sempre accel. e cresc. Più animato** **Rall.**
f

67 **Lentamente**
a 2
ff

71 12 **Tempo 1o.** 13 **Più mosso** *cresc. ed accel. molto*
f *f*

81 *ff* *ff* *ff* *sec.*

II. Nocturno

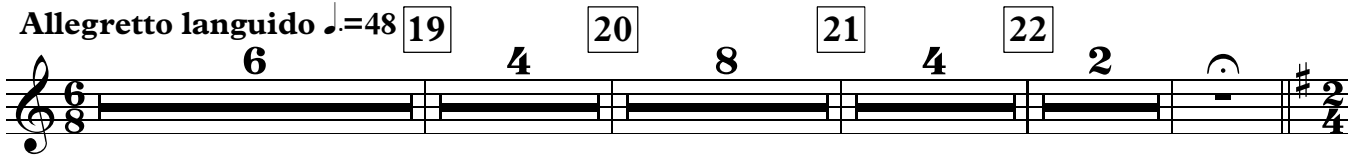
Andante molto espressivo ♩=56

TACET

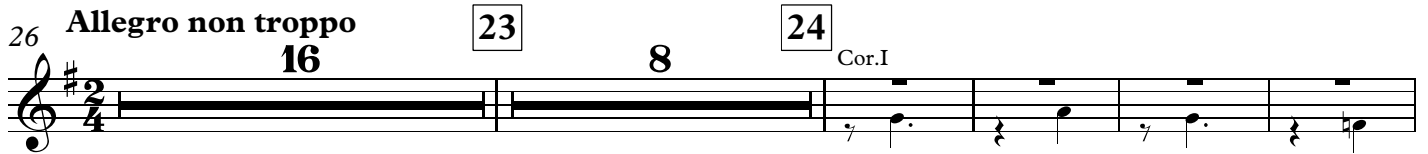


III. Canto y Danza

Allegretto languido ♩=48



26 Allegro non troppo



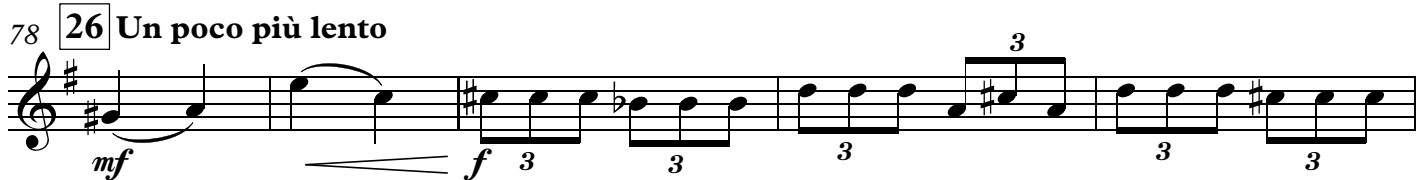
54 Più mosso



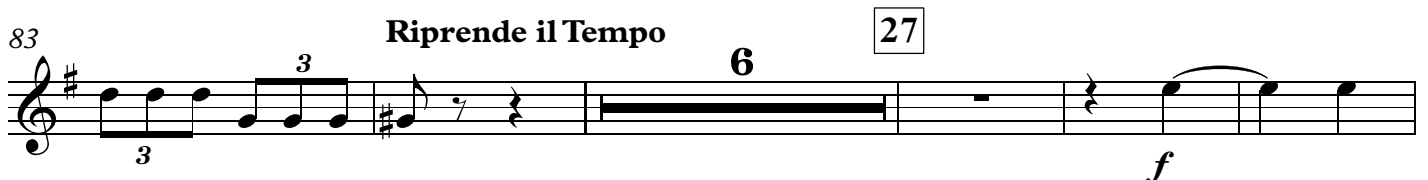
66 I. poco rit.



78 26 Un poco più lento



83 Riprende il Tempo



94 **Animando** 28

ff

Detailed description: This staff contains measures 94 through 99. It begins with a treble clef and a key signature of one sharp (F#). The tempo marking 'Animando' is placed above the staff. A box containing the number '28' is located above the final measure. The music features a melodic line with some rests and a dynamic marking of 'ff' (fortissimo) at the end.

100 **cresc. ed animando ancora**

ff ff ff ff ff ff

Detailed description: This staff contains measures 100 through 105. It continues with the same treble clef and key signature. The tempo marking 'cresc. ed animando ancora' is placed above the staff. The music consists of six measures, each starting with a dynamic marking of 'ff' (fortissimo).

106 29 30

ff ff p sord.

Detailed description: This staff contains measures 106 through 110. It features two measures with 'ff' dynamics, followed by two measures with rests marked with the numbers '4' and '7'. The final measure has a dynamic marking of 'p' (piano) and a 'sord.' (sordina) marking. A hairpin symbol indicates a crescendo.

121 31 32 33

3 12 4

Detailed description: This staff contains measures 121 through 125. It features two measures with rests marked with the numbers '3', '12', and '4'. The staff ends with a double bar line and a repeat sign.

143 **Tbn. I/II**

Detailed description: This staff contains measures 143 through 147. It is written for the Trombone I/II part and uses a bass clef with a key signature of one sharp. The music consists of five measures of a steady melodic line.

148 **34 Più mosso**

ff f

Detailed description: This staff contains measures 148 through 152. It begins with a first ending bracket labeled 'I.'. The tempo marking 'Più mosso' is placed above the staff. The music features a melodic line with eighth notes and a dynamic marking of 'ff' (fortissimo) at the beginning and 'f' (forte) at the end.

153 **35 Più tranquillo** Rit.

ff **5 3**

Detailed description: This staff contains measures 153 through 164. The tempo marking 'Più tranquillo' is placed above the staff, with 'Rit.' (ritardando) to its right. The music features a melodic line with eighth notes and a dynamic marking of 'ff' (fortissimo). It concludes with two measures of rests marked with the numbers '5' and '3'.

165 **36 Vivace**

f ff ff Sec **3 3 3**

Detailed description: This staff contains measures 165 through 170. The tempo marking 'Vivace' is placed above the staff. The music features a melodic line with eighth notes and a dynamic marking of 'f' (forte) at the beginning, 'ff' (fortissimo) in the middle, and 'ff Sec' (fortissimo second ending) at the end. It includes three triplet markings over groups of three notes.

Chapultepec

Manuel M. Ponce

I. Primavera

Allto. affettuoso $\text{♩} = 100$ 1 8 2 3 3 4

20 **4** **Più animato** $\text{♩} = 88$
a 2
f

24 **5** **Animando sempre** **cresc. e più stretto** **rall.** **Lentamente**
a 2
ff

36 **6** **Andante** **5** **7**
p *f*

45 **8** **Andante** **9** **Più animato**
p **4** **3** **6**

59 **10** **Sempre accel. e cresc.** **Più animato** **Rall.**
4 **2**
f

67 **Lentamente**
a 2
ff

71 **12** **Tempo 1o.** **13** **Più mosso** **cresc. ed accel. molto**
4 **2** **2**
f *f*

81 *ff* *ff* *ff* *sec.*

II. Nocturno

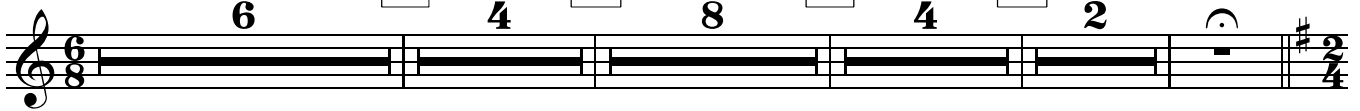
Andante molto espressivo ♩=56

TACET

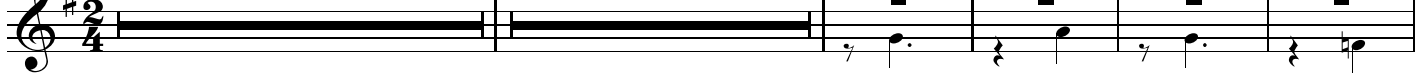


III. Canto y Danza

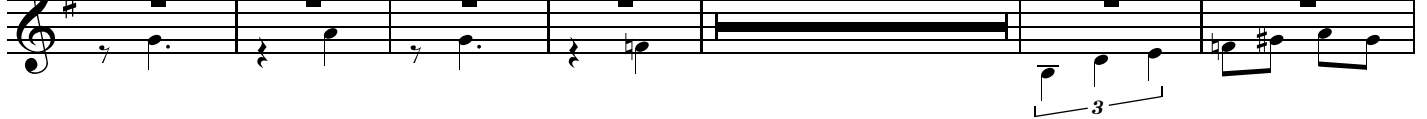
Allegretto languido ♩=48



26 Allegro non troppo
16



54 Più mosso



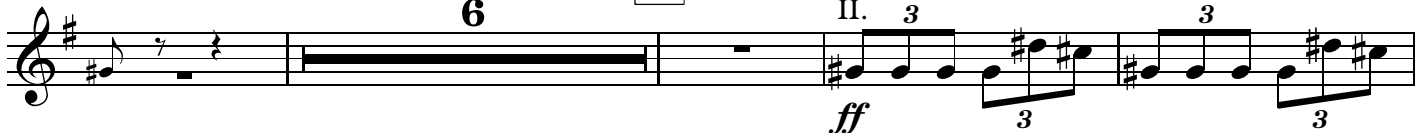
66 II. poco rit. 5 3



78 26 Un poco più lento



84 Riprende il Tempo



94 **Animando**

99 **28** **cresc. ed animando ancora**

105 **29**

119 **30** **sord.** **31**

127 **32** **33** **Tbn.I/II**

148 **34** **Più mosso** **II.**

153 **35** **Più tranquillo** **5** **Rit.** **3**

165 **36** **Vivace**

Chapultepec

Manuel M. Ponce

I. Primavera

Allto. affettuoso ♩=100

TACET



II. Nocturno

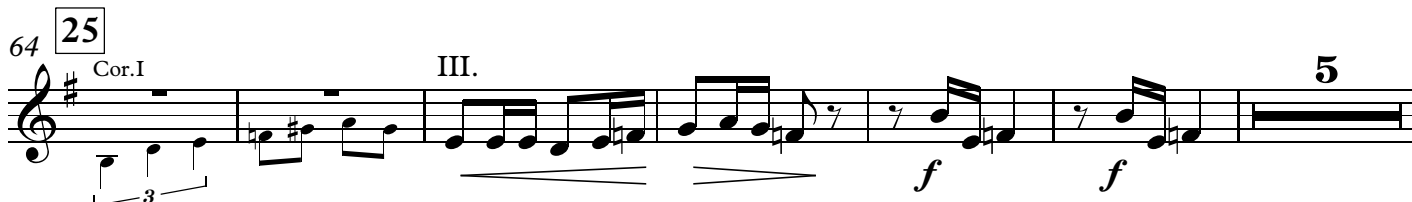
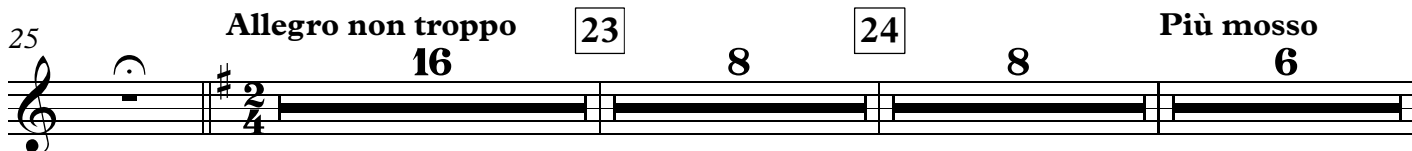
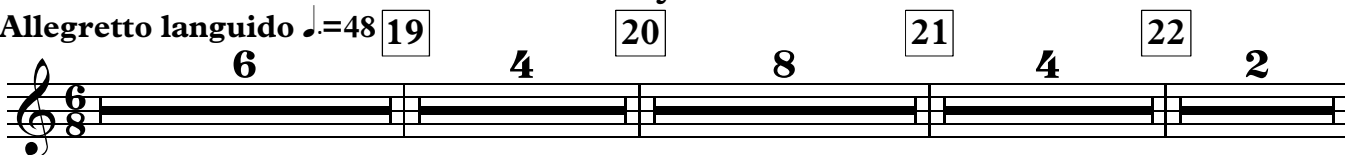
Andante molto espressivo ♩=56

TACET



III. Canto y Danza

Allegretto languido ♩=48



84 **Riprende il Tempo** 27

94 **Animando**

99 28 **cresc. ed animando ancora**

105 29 30 **sord.**

120 31 32 **12**

139 33 **4** **Tbn. I/II**

148 34 **Più mosso** **III.**

153 35 **Più tranquillo** **5** **Rit.** **3**

165 36 **Vivace**