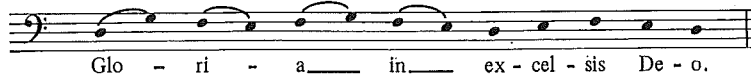


2. THE MEAN MASS

Christopher Tye

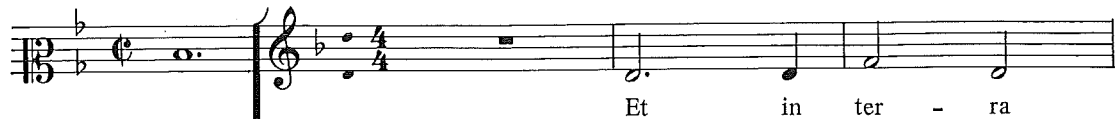
Gloria

[Celebrant]



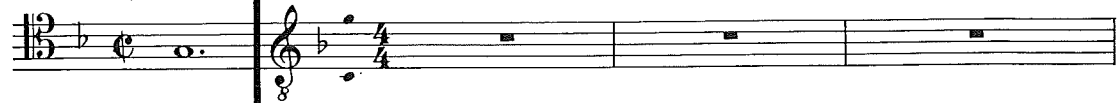
Glo - ri - a in - ex - cel - sis De - o.

MEAN



Et in ter - ra

COUNTER
TENOR 1

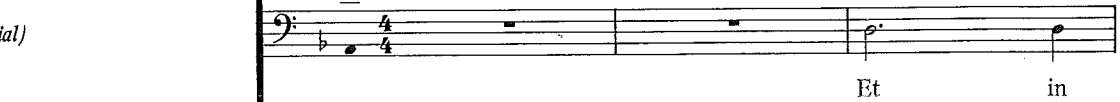


COUNTER
TENOR 2



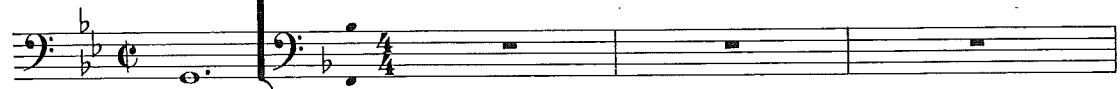
Et in ter - ra pax

TENOR (*editorial*)

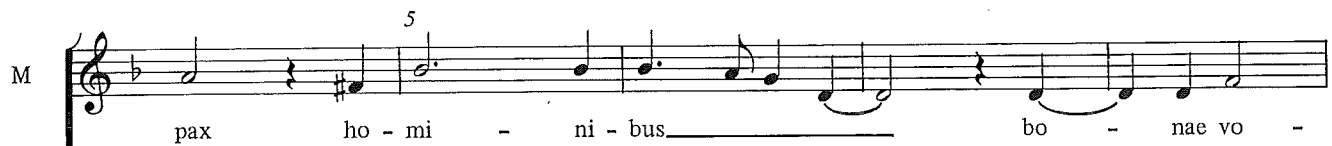


Et in

BASS



5



M pax ho - mi - ni - bus bo - nae vo -



C1 Bo - nae vo - lun - ta -



C2 ho - mi - ni - bus bo - nae vo - lun - ta -



T ter - ra pax ho - mi - ni - bus bo -



B Bo - nae vo - lun - ta -

© Copyright 1980 by The British Academy

M Be-ne-di - ci - mus te. A-do-ra - mus _____ te, a-do-

C1 _____ A-do-ra - mus _____ te. Glo - ri - fi - ca - mus _____

C2 _____

T - mus te. A-do-ra - mus _____ te. Glo-ri - fi - ca - mus

B - di - ci-mus te. A-do-ra - mus te. Glo - ri - fi -

M - ra - mus _____ te. Glo-ri - fi - ca - mus _____ te. (♩=♩)

C1 _____ te, _____ glo - ri - fi - ca - mus _____ te.

C2 _____

T te, glo - ri - fi - ca - mus, glo - ri - fi - ca - mus te.

B - ca - mus te, glo - ri - fi - ca - mus _____ te.

M
Gra - ti - as a - gi - mus ti - bi pro - pter ma - gnam

C1
Gra - ti - as a - gi - mus ti - bi pro - pter ma - gnam

C2
Gra - ti - as a - gi - mus ti - bi pro - pter ma - gnam

T
Gra - ti - as a - gi - mus ti - bi pro - pter ma - gnam

B
Gra - ti - as a - gi - mus ti - bi pro - pter ma - gnam

M
glo - ri - am tu - - am, Do - mi - ne De - us, rex cœ -

C1
glo - ri - am tu - - am,

C2
glo - ri - am tu - - am,

T
glo - ri - am tu - - am, Do - mi - ne

B
glo - ri - am tu - - am,

40

M
- le - - - stis, De - us, Pa -

C1
Do - mi - ne De - us, rex cœ - le - stis,

C2
Do - mi - ne De -

T
De - us, rex cœ - le - stis, De - us, Pa - ter o - mni - po - tens,

B

45


M
- - - ter, De - us, Pa - ter, De - us, Pa - ter o - mni - po - tens,

C1
De - us, Pa - ter o - mni - po - tens, De - us, Pa - ter o -

C2
- us, rex cœ - le - stis, De - us, Pa - ter, De - us, Pa -


T
De - us, Pa - ter, De - us, Pa - ter o - mni - po - tens,

B
Do - mi - ne De - us, rex cœ - le - stis,

M  De - us, Pa - ter o - mni - po - tens. Do -

C1  -mni - po-tens. Do - mi -

C2  -ter o - mni - po - tens. Do - mi -

T  o - mni - po - tens. Do - mi-ne

B  De - us, Pa - ter o - mni - po-tens. Do - mi -

M  - mi - ne Fi - li u - ni - ge - ni - te, Je - su Chri -

C1  -ne Fi - li u - ni - ge - ni - te, Je - su

C2  -ne Fi - li u - ni - ge - ni - te, Je - su Chri -

T  Fi - li u - ni - ge - ni -

B  -ne Fi - li u - ni - ge - ni -

60

M (♩ = ♩) $\frac{3}{4}$

- - - - - ste,

C1 $\frac{3}{4}$

Chri - - - - - ste,

C2 $\frac{3}{4}$

- - - ste, Je - su Chri - - - - ste,

T $\frac{3}{4}$

-te, Je - su Chri - ste, Je - su Chri - ste,

B $\frac{3}{4}$

-te, Je - su Chri - - - - - ste,

65

M $\frac{3}{4}$

Do - mi - ne De - us, A - gnus De - i, Fi - li -

C1 $\frac{3}{4}$

Do - mi - ne De - us, A - gnus De - i, Fi - li - us

C2 $\frac{3}{4}$

Do - mi - ne De - us, A - gnus De - i,

T $\frac{3}{4}$

Do - mi - ne De - us, A - gnus De - i, Fi - li - us

B $\frac{3}{4}$

Do - mi - ne De - us, A - gnus De - i,

M
- us Pa - - - tris, Fi - li - us Pa - -

C¹
Pa - - - - -

C²
Fi - li - us Pa - - - - -

T
Pa - tris, Fi - li - us Pa - - - - -

B
Fi - li - us Pa - - - - -

M
- tris, Fi - li - us Pa - - - tris,

C¹
- tris, Fi - li - us Pa - tris,

C²
- tris, Fi - li - us Pa - - - tris,

T
- tris, Fi - li - us Pa - - tris,

B
- tris, Fi - li - us Pa - - - tris,

M Qui tol - lis pec - ca - ta mun -

C1 mi - se - re - re

C2 Qui tol - lis pec - ca - ta mun - di, mi - se - re - re no -

T Qui tol - lis pec -

B Qui tol - lis pec - ca - ta mun -

M - di, mi - se - re - re no - bis, mi - se - re - re no -

C1 no - bis.

C2 bis, mi - se - re - re no -

T - ca - ta mun - di, mi - se - re - re no -

B - di, mi - se - re - re no - bis,

M
 - - - bis. Qui tol - lis pec - ca - ta

C1
 Qui tol - lis pec - ca - ta mun - -

C2
 - - - bis.

T
 - bis, mi - se - re - re no - bis. Qui tol - lis pec - ca -

B
 mi - se - re - re no - bis. Qui tol - lis pec -

M
 mun - di, sus - ci - pe

C1
 - - - di, sus -

C2
 - - -

T
 - ta mun - di, sus - ci - pe de - pre - ca - ti -

B
 - ca - ta mun - di, sus - ci - pe de - pre - ca -

M Musical staff for Soprano (M) in 3/4 time, key of B-flat major. The melody consists of quarter and eighth notes.

-stram. Qui se - des ad dex - te - ram Pa - - tris,

C1 Musical staff for Alto (C1) in 3/4 time, key of B-flat major. The melody consists of quarter and eighth notes.

-stram. Qui se - des ad dex - te - ram Pa - - tris,

C2 Musical staff for Contralto (C2) in 3/4 time, key of B-flat major. The melody consists of quarter and eighth notes.

-stram, Qui se - des ad dex - te - ram Pa - - tris,

T Musical staff for Tenor (T) in 3/4 time, key of B-flat major. The melody consists of quarter and eighth notes.

-stram, Qui se - des ad dex - te - ram Pa - - tris,

B Musical staff for Bass (B) in 3/4 time, key of B-flat major. The melody consists of quarter and eighth notes.

-stram. Qui se - des ad dex - te - ram Pa - - tris,

M Musical staff for Soprano (M) in 4/4 time, key of B-flat major. The melody consists of quarter and eighth notes.

mi - se-re - re no - bis, mi - se-re - re no - - bis.

C1 Musical staff for Alto (C1) in 4/4 time, key of B-flat major. The melody consists of quarter and eighth notes.

mi - se-re - re no - - - - - bis.

C2 Musical staff for Contralto (C2) in 4/4 time, key of B-flat major. The melody consists of quarter and eighth notes.

mi - se-re - re no - - bis.

T Musical staff for Tenor (T) in 4/4 time, key of B-flat major. The melody consists of quarter and eighth notes.

mi - se-re - re no - - bis.

B Musical staff for Bass (B) in 4/4 time, key of B-flat major. The melody consists of quarter and eighth notes.

mi - se-re - re no - - - - - bis.

M Quo - ni-am tu so - lus san - ctus,

C1 Tu so - lus

C2 Quo - ni - am tu so - lus san - -

T Quo - ni-am tu so - lus san - ctus,

B Quo - ni - am tu so - lus san - ctus,

M Tu so - lus Do - mi - nus,

C1 Do - mi-nus, Tu so - lus Do - mi-nus, -

C2 - ctus, Tu so - lus Do - mi - nus, -

T Tu so - lus Do - mi-nus, Tu so -

B Tu so - lus Do - mi-nus, -

M Tu so - lus al - tis - si - mus, Tu

C1 Tu so - lus al - tis - si - mus, Tu so -

C2 Tu so - lus al - tis - si - mus,

T - lus al - tis - si - mus, Tu so - lus al - tis - si - mus,

B Tu so - lus al - tis - si - mus, al - tis - si -

M so - lus al - tis - si - mus, Je - su

C1 - lus al - tis - si - mus, Je - su

C2 Tu so - lus al - tis - si - mus, Je - su

T al - tis - si - mus, Je - su

B - mus, Tu so - lus al - tis - si - mus, Je - su

M
Chri - - - - ste

C1

C2
Chri - - - - ste

T
Chri - - - - ste

B
Chri - - - - ste

M
cum San-cto Spi-ri - tu

C1
cum San - cto Spi - ri -

C2
cum San-cto Spi-ri - tu

T
cum San - cto Spi-ri - tu

B
cum San-cto Spi - ri - tu

M
— in glo - ri - a De - i Pa - tris. A -

C1
-tu in glo - ri - a De - i Pa - - tris. A -

C2
— in glo - ri - a De - i Pa - tris. —

T
in glo - ri - a De - i Pa - tris. A - men, a -

B
— in glo - ri - a De - i Pa - - tris. A -

M
- - - men, a - - - - - men.

C1
-men, a - men, a - - - - - men.

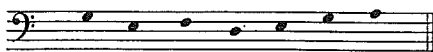
C2
A - men, a - - - - - men.

T
- - - men, a - - - - - men.

B
- - - men, a - - - - - men.

Credo

[Celebrant]



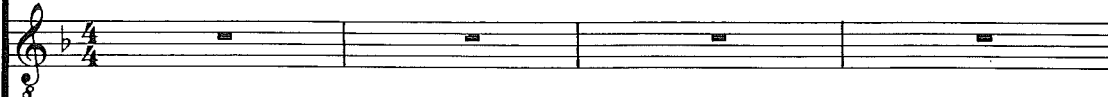
Cre - do in u - num De - um,

MEAN



Pa - trem o - mni - po - ten - tem, fa -

COUNTER-TENOR 1

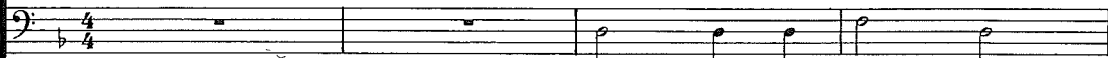


COUNTER-TENOR 2



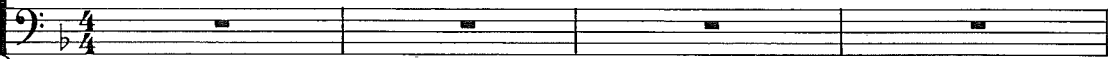
Pa - trem o - mni - po - ten - tem, fa - cto -

TENOR



Pa - trem o - mni - po -

BASS



- cto - rem cœ - li, fa - cto - rem cœ -



Fa - cto - rem cœ - li et ter -



- rem cœ - li, fa - cto - rem cœ - li et ter -



- ten - tem, fa - cto -



Fa - cto - rem cœ - li et ter -

10

M
li et ter - - - rae,

C1
- - - - - rae,

C2
- rae, et ter - - - rae, vi - si - bi - li-um

T
-rem cœ - li et ter - - - rae,

B
- - - - - rae, vi - si -

15

M
vi - si - bi - li - um o - mni-um et

C1
- - - - -

C2
o - mni - um et in - vi - si - bi - li-um. Et in u - num

T
vi - si - bi - li-um o - mni-um et

B
- bi - li-um o - mni-um et in - vi - si - bi - li-

M in - vi - si - bi - li - um. Et in u -

C1

C2 Do - mi-num Je - sum Chri-stum, Fi - li-um, Fi -

T in - vi - si - bi - li-um. Et in u - num Do - mi-num Je - sum Chri -

B - um. Et in u - num Do - mi - num Je - sum Chri-stum, Fi - li -

M - num Do - mi - num Je - sum Chri - stum, Fi - li -

C1

C2 - li-um De - - - - - i,

T - tum, Fi - li - um De - i, Fi - li-um De - i, Fi - li - um

B - um De - i, Fi - li - um De - - - i,

30

M
 -um De - i u - ni - ge - ni - tum,

C1

C2
 Fi - li - um De - i u - ni - ge - ni - tum,

T
 De - i u - ni - ge - ni - tum,

B
 Fi - li - um De - i u - ni - ge - ni - tum,

35

M
 Et ex Pa - tre na - tum an - te o - mni - a

C1
 Et ex Pa - tre na - tum an - te o - mni - a

C2
 Et ex Pa - tre na - tum an - te o - mni - a

T
 Et ex Pa - tre na - tum an - te o - mni - a

B
 Et ex Pa - tre na - tum an - te o - mni - a

40 $(♩ = ♩)$

M
 sæ - cu - la: De - um de De - o, _____

C1
 sæ - cu - la: De - um de De - o, Lu - men de

C2
 sæ - cu - la: De - um de De - o,

T
 sæ - cu - la: De - um de De - o, Lu - men de

B
 sæ - cu - la: De - um de De - o, Lu - men de

45

M
 Lu - men de Lu - mi - ne, De - um ve - - -

C1
 Lu - mi - ne, De - um ve - rum

C2
 Lu - men de Lu - mi - ne, De - um ve - - - rum

T
 Lu - mi - ne, De - um _____ ve - - - - rum

B
 Lu - mi - ne, De - um ve - rum de De -

M
- rum de De - o ve - ro, Ge - ni-tum non fa -

C1
de De - o, de De - o ve - ro, Ge - ni-tum non fa -

C2
de De - o, de De - o ve - ro, Ge - ni-tum non

T
de De - o, de De - o ve - ro, Ge - ni-tum non fa -

B
- o ve - - - - - ro.

M
- ctum, con - sub - stan - ti - a - lem Pa - tri, per quem

C1
- ctum, con - sub - stan - ti - a - lem Pa - tri, per quem o -

C2
fa - ctum, con - sub - stan - ti - a - lem Pa - tri, per quem

T
- ctum, con - sub - stan - ti - a - lem Pa - tri, per quem

B

M
o - mni - a fa - cta _____ sunt. Qui pro-pter

C1
- mni - a fa - cta _____ sunt. Qui pro-pter

C2
_____ o - mni - a fa - cta sunt. Qui pro-pter

T
_____ o - mni - a fa - cta sunt. Qui pro-pter

B
_____ Qui pro-pter

M
nos ho - mi - nes _____ et pro-pter no - stram sa - lu -

C1
nos ho - mi - nes et pro-pter no - stram sa - lu - tem,

C2
nos ho - mi - nes _____ et pro-pter no - stram sa -

T
nos ho - mi - nes et pro-pter no - stram sa - lu -

B
nos ho - mi - nes _____ et pro - pter no -

M
- tem de - scen - dit de coe - - lis,

C1
sa - lu - tem de - scen-dit de coe - - lis,

C2
- lu - - - tem de - scen - dit de coe - lis,

T
- tem, sa - lu - - - tem de - scen-dit de coe - lis,

B
- stram sa - lu - - - tem de-scen - dit de coe - - lis,

M

C1

C2
Et in - car - na - tus est de Spi - ri - tu San -

T
Et in - car - na - tus est _____ de Spi - ri - tu

B
Et in - car - na - tus est

M

C1

C2

T

B

- cto, de Spi - ri - tu San - - cto ex

San - cto, San - - cto ex Ma - ri - a vir - gi -

de Spi - ri - tu San - cto ex Ma - ri -

M

C1

C2

T

B

Ma - ri - a vir - gi - ne, Et ho - mo fa -

-ne, Et ho - mo fa - ctus est, et ho -

- a vir - gi - ne, Et ho - mo fa -

M Cru - ci - fi - xus e - ti - am

C1 Cru - ci - fi - xus e - ti - am

C2 - ctus est.

T - mo fa - ctus est.

B - ctus est. Cru -

M pro no - - -

C1 pro no - -

C2

T Cru - ci - fi - xus e - ti - am pro

B - ci - fi - xus e - ti - am

M
- - - bis sub Pon - ti - o Pi - la - to,

C1
- - - bis sub Pon - ti - o Pi - la -

C2

T
no - - - - - bis sub Pon - ti -

B
pro no - - - - - bis

M
pas - sus et se - pul - tus

C1
- to, pas - sus et se - pul - tus

C2

T
- o Pi - la - to,

B
sub Pon - ti - o Pi - la - to,

M
est, pas - sus et se - pul - tus

C1
est, pas - sus et se - pul - tus

C2

T
pas - sus et se - pul - tus est,

B
pas - sus et se - pul - tus est,

M
est, pas - sus et se - pul - tus est.

C1
est, pas - sus et se - pul - tus est.

C2
Et

T
pas - sus et se - pul - tus est.

B
pas - sus et se - pul - tus est.

M
Et re-sur-re - xit ter-ti-a di - - - e,

C1
Et re-sur-re - xit ter-ti-a di - e, ter-ti-a di -

C2
re-sur-re - xit ter-ti - a di - e,

T
Et re-sur-re - xit ter-ti-a di - e, ter-ti - a di - -

B
Et re-sur-re - xit ter-ti-a, ter-ti-a di - -

M
ter-ti - a di - e se - cun - dum scri - ptu - -


C1
- e se - cun - dum scri - ptu - - ras,

C2
ter-ti - a di - e se - cun - dum scri - ptu - -

T
- - e se - cun - dum scri - ptu - ras,

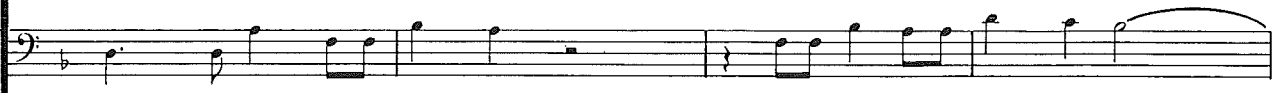
B
- e se - cun - dum scri - ptu - ras,


120

M 
 - - ras, et a-scen - dit in cœ - lum, se - det. ad

C1 
 et a-scen - dit in cœ - lum, se - - det

C2 
 - - ras, et a-scen - dit in cœ - lum, se - det.

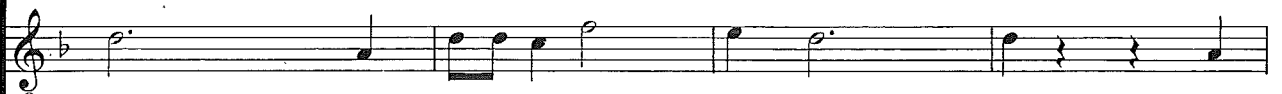
T 
 Et a-scen - dit in cœ - lum, et a-scen-dit in cœ - lum, se -

B 
 et a - scen - dit in cœ - lum, se - - - det

125

M 
 dex-te - ram Pa - - - tris, ad dex-te-

C1 
 ad dex-te-ram Pa - - - tris, ad dex-te-ram Pa -

C2 
 ad dex-te-ram Pa - - - tris, ad

T 
 - det ad dex-te-ram Pa - tris,

B 
 ad dex-te-ram Pa - - - tris, ad dex-te-ram

130 (♩ = ♩.)

M
-ram Pa - - - - - tris._____

C1
- - - - - tris.

C2
dex-te-ram Pa - - - - - tris.

T
ad dex-te-ram Pa - - tris._____

B
Pa - - - - - tris._____

135

M
Et ex - spe - cto re - sur - re - cti - o - - - - - nem_____

C1
Et ex - spe - cto re - sur - re - cti - o - - - - -

C2
Et ex - spe - cto re - sur -

T
Et ex - spe - cto re - sur -

B
Et ex -

140

M
 mor - tu - o - - - - -

C1
 - nem mor - tu - o - - - - -

C2
 - re - cti - o - - - - -

T
 Et ex - spe - cto re - sur - re - cti - o - nem

B
 - spe - cto re - sur - re - cti - o - nem mor - tu -

145

M
 - - - - - rum, Et vi - tam ven - tu - ri

C1
 - - - - - rum, Et vi - tam ven - tu - ri sæ - cu - li,

C2
 - nem mor - tu - o - - - - - rum, Et vi - tam ven - tu - ri

T
 mor - tu - - - - - rum, Et vi - tam ven - tu - ri

B
 - o - - - - - rum, Et vi - tam ven - tu - ri sæ - cu - li,

M sæ - cu - li, a -

C1 a - - - men, sæ - cu - li, sæ -

C2 sæ - cu - li, a - - - -

T sæ - cu - li, a - men,

B a - men, sæ - cu - li, a - - - -

(♩ = ♩)

M - men, sæ - cu - li, a - - - men.

C1 - cu - li, a - - - men.

C2 - - men, sæ - cu - li, a - men.

T sæ - cu - li, a - - - men.

B - - - - - men.

Sanctus

MEAN

COUNTER-TENOR 1

COUNTER-TENOR 2

TENOR

BASS

San - - - - ctus,

San - - - - ctus, San - -

San - - - -

San - - - -

Detailed description: This system contains five vocal staves. The MEAN part is in the soprano register, starting with a whole note G4 and a half note A4. COUNTER-TENOR 1 is silent. COUNTER-TENOR 2 starts with a whole note G4 and a half note A4. TENOR starts with a whole note G3 and a half note A3. BASS is silent. The lyrics are 'San - - - - ctus,'.

M

C¹

C²

T

B

San - - - - ctus, San - - - -

San - - - - ctus, San - -

- ctus, San - - - - ctus, San - -

- - - - ctus, San - -

San - - - -

San - - - -

Detailed description: This system contains six vocal staves. MEAN (M) starts with a half note G4 and a half note A4. COUNTER-TENOR 1 (C1) starts with a whole note G4 and a half note A4. COUNTER-TENOR 2 (C2) starts with a whole note G4 and a half note A4. TENOR (T) starts with a whole note G3 and a half note A3. BASS (B) starts with a whole note G2 and a half note A2. The lyrics are 'San - - - - ctus, San - - - -'.

10

M - ctus,

C1 - ctus, San - ctus,

C2 - ctus,

T ctus,

B - ctus,

15

M Do - mi - nus De - us Sa - ba - oth,

C1 Do -

C2 Do - mi - nus De - us Sa - ba - oth,

T Do - mi - nus De - us Sa -

B Do - mi - nus De - us Sa - ba -

M Do - mi - nus De - us Sa - ba - oth,

C1 - mi - nus De - us Sa - ba - oth, Do -

C2 Do - mi - nus De - us Sa - ba - oth,

T - ba - oth, Do - mi - nus

B - oth, Do - mi - nus De - us Sa -

M Do - mi - nus De - us Sa - ba - oth, Sa - ba - oth, Sa - ba -

C1 - mi - nus De - us Sa - ba - oth, Sa - ba -

C2 Sa - ba - oth,

T De - us Sa - ba - oth, Sa - ba -

B - ba - oth, Sa - ba - oth,

M
- oth, Sa - ba - - - - oth;

C1
- oth, Sa - ba - - - - oth;

C2
Sa - ba - - - - oth;

T
- oth, Sa - ba - - - - oth;

B
Sa - ba - - - - oth;

30

M

C1
ple - ni sunt cœ - li et ter - ra, ple -

C2
ple - ni sunt cœ - li, ple - ni sunt cœ - li

T
ple - ni sunt cœ - li et ter -

B
ple - ni sunt cœ - li et

M

C1
 - ni sunt cœ - - li et ter - - - ra, sunt cœ -

C2
 et ter - ra, et ter - - - - ra,

T
 - - - - ra, ple - ni sunt cœ - li et

B
 ter - - - - ra, ple - ni sunt cœ - li

M

C1
 -li et ter - ra, ple - ni sunt cœ - li et

C2
 sunt cœ - li et - - - - ter - ra, ple - ni sunt cœ - li - - - -

T
 ter - - - - ra, ple - ni sunt cœ - li

B
 et ter - - - - ra, ple - ni sunt cœ -

M

C1
ter - - ra, et ter - - ra

C2
et ter - - ra

T
et ter - - ra, et ter - - ra

B
- li et ter - - ra

M
glo - ri - a tu - -

C1
glo - ri - a tu - -

C2

T
glo - ri - a tu -

B
glo - ri - a tu - - a,

M
- - a, glo - ri - a tu - - -

C1
- a, glo - ri - a tu - - - a, glo - ri - a tu -

C2
- - - - -

T
- - a, glo - ri - a tu - - - - -

B
tu - - - - a, glo - ri - a tu - a,

(d=d.)

M
- a, glo - ri - a tu - - - a;

C1
- - - - - a;

C2
- - - - -

T
- - a, - - - - glo - ri - a tu - - - a;

B
glo - ri - a, tu - - - - a;

M O - san - na in ex - cel - sis,

C1 O - san - na in ex - cel - sis,

C2 O - san - na

T O -

B O - san - na in ex -

M O - san - na in ex - cel - sis,

C1 in ex - cel - sis,

C2 in ex - cel - sis, O - san - na in

T - san - na in ex - cel - sis, O - san - na in

B - cel - sis, O -

M O - san - na in ex - cel - sis, O - san - na in ex - cel -

C1 O - san - na in ex - cel - - - - -

C2 ex - cel - - - - -

T - - ex - cel - sis, O - san - na in ex - cel - -

B - san - na in ex - cel - - - - -

M -sis, O - san - na in ex - cel - - - - -sis;

C1 -sis, O - san - na in ex - cel - - - - -sis;

C2 -sis, O - san - na in ex - cel - - - - -sis;

T -sis, O - san - na in ex - cel - - - - -sis;

B -sis, O - san - na in ex - cel - - - - -sis;

M

C1

C2

T

B

be - ne - di - ctus _____ qui ve - nit, _____

be - ne - di - ctus _____

be - ne - di - ctus _____ qui ve - nit, _____

M

C1

C2

T

B

be - ne - di - ctus _____ qui ve - nit, _____

qui ve - nit, _____

qui ve - nit, _____ be - ne - di - ctus _____

_____ qui ve - nit, _____

M
be - ne - di - ctus _____ qui ve - nit, _____

C1

C2
_____ qui ve - nit, _____ qui ve - nit _____

T
- ctus _____ qui ve - nit, _____ qui ve -

B
_____ qui ve - nit _____

M
qui ve - nit _____ in no - mi - ne

C1
qui ve - nit _____ in no - mi - ne Do - mi -

C2
_____ in no - mi - ne _____ Do - mi -

T
- nit _____ in no - mi - ne, in no - mi -

B
_____ in no - mi - ne _____ Do -

M Do - mi - - - - -

C1 - - - - - ni, _____

C2 -ni, _____ in no - mi - ne

T - ne Do - mi - ni, _____

B - mi - ni, _____

105

M - - - - - ni;

C1 Do - mi - - - - ni;

C2 Do - mi - - - - ni;

T - in no - mi - ne Do - mi - - - ni;

B - - - - - Do - mi - - - ni;

M Musical staff for Soprano (M) in G major, 4/4 time. The melody begins with a whole rest, followed by quarter notes G4, A4, B4, and quarter notes G4, F4, E4, ending with a half note D4.

O - san - na in ex - cel - sis,

C1 Musical staff for Alto (C1) in G major, 4/4 time. The melody begins with a whole rest, followed by quarter notes G4, A4, B4, and quarter notes G4, F4, E4, ending with a half note D4.

O - san - na in ex -

C2 Musical staff for Alto (C2) in G major, 4/4 time. The melody begins with a whole rest, followed by quarter notes G4, A4, B4, and quarter notes G4, F4, E4, ending with a half note D4.

O - san - na in ex - cel - - - - -

T Musical staff for Tenor (T) in G major, 4/4 time. The melody begins with a whole rest, followed by quarter notes G3, A3, B3, and quarter notes G3, F3, E3, ending with a half note D3.

O - san - na in ex - cel - sis, O - san - na in

B Musical staff for Bass (B) in G major, 4/4 time. The melody begins with a whole rest, followed by quarter notes G2, A2, B2, and quarter notes G2, F2, E2, ending with a half note D2.

O - san - na in ex - cel - - - - -

M Musical staff for Soprano (M) in G major, 4/4 time. The melody begins with a whole rest, followed by quarter notes G4, A4, B4, and quarter notes G4, F4, E4, ending with a half note D4.

O - san - na in ex - cel - sis, O - san - na in

C1 Musical staff for Alto (C1) in G major, 4/4 time. The melody begins with a whole rest, followed by quarter notes G4, A4, B4, and quarter notes G4, F4, E4, ending with a half note D4.

- cel - sis, O - san - na

C2 Musical staff for Alto (C2) in G major, 4/4 time. The melody begins with a whole rest, followed by quarter notes G4, A4, B4, and quarter notes G4, F4, E4, ending with a half note D4.

- sis, O - san - na in ex - cel - sis,

T Musical staff for Tenor (T) in G major, 4/4 time. The melody begins with a whole rest, followed by quarter notes G3, A3, B3, and quarter notes G3, F3, E3, ending with a half note D3.

- ex - cel - sis, O - san - na in ex - cel - sis, O -

B Musical staff for Bass (B) in G major, 4/4 time. The melody begins with a whole rest, followed by quarter notes G2, A2, B2, and quarter notes G2, F2, E2, ending with a half note D2.

- sis, O - san - na in ex - cel -

M
ex - cel - - - sis, O - san - na in ex - cel -

C1
in ex - cel - - - - - sis, in ex -

C2
O - san - na in ex - cel - sis, O - san - na in

T
- san - na in ex - cel - sis, O - san - na in ex - cel - sis, in ex -

B
- - - - - - - - - -

M
- - sis, O - san - na in ex - cel - sis.

C1
- cel - sis, in ex - cel - - - - sis.

C2
- ex - cel - sis, in ex - cel - - - - sis.

T
- cel - sis, O - san - na in ex - cel - sis.

B
- - sis, O - san - na in ex - cel - sis.

Agnus Dei

MEAN

COUNTER-TENOR 1

COUNTER-TENOR 2

TENOR

BASS

A - - - - gnus De -

A - - - - gnus De - -

A - - - -

M

C1

C2

T

B

5

- - - - - i, - - - - A - gnus De -

A - gnus De - - - -

- - - - i, A - gnus De - - - - i, A -

- - gnus De - - i, A -

A - gnus De - - - -

10

M
- - - - - i,

C1
- - - - - i, De - - i,

C2
- gnus De - - - - i,

T
- gnus De - - - - i,

B
- i, De - - - - i,

15

M
qui tol - lis pec - ca - ta mun - - -

C1
qui tol - lis pec - ca - ta mun - - -

C2
- - - - -

T
- - - - -

B
- - - - -

M di, pec - ca - ta mun -

C1 - di, pec - ca - ta mun - - - -

C2

T qui tol - lis pec - ca - ta mun - - - -

B qui tol - lis pec - ca - ta mun - - - -

M di, _____

C1 - di, pec - ca - ta

C2 pec - ca - ta mun - - - -

T - di, pec - ca - ta mun - - - - di, _____

B - di, pec - ca - ta mun - - - -

30

M
pec - ca - ta mun - di:

C1
mun - di, mun - di:

C2
di:

T
pec - ca - ta mun - di:

B
di:

35

M
mi - se - re - re no -

C1
mi - se - re - re no

C2
mi - se - re - re no - bis, mi - se -

T
mi - se - re - re no -

B
mi - se - re - re no -

M *bis,*

C1

C2 *-re - re no - - - bis, no - -*

T *- - - bis, no - bis, no -*

B *- - - bis,*

40

M *no - - - bis. _____*

C1 *- bis, no - - - bis.*

C2 *- - - bis, no - - - bis.*

T *- - - bis, no - - - bis.*

B *no - - - bis, no - - - bis.*

M

C1

C2

T

B

A - gnus De - - -

A - gnus

A - gnus De - - -

A - gnus De - - -

M

C1

C2

T

B

- i,

De - - - - - i, qui tol - lis pec-

- i, qui tol - lis pec-ca - ta mun - di, qui tol - lis pec-ca - ta

- - - i, qui tol - lis pec-ca - ta mun - -

M

C1
qui tol - lis pec - ca - ta, qui tol - lis pec - ca - ta mun -

C2
- ca - ta mun - - - - di, qui tol - lis pec -

T
- mun - di, qui tol - lis pec - ca - ta, qui tol - lis pec - ca - ta

B
- di, qui tol - lis pec - ca - ta mun - -

M

C1
- di, qui tol - lis pec - ca - ta mun - - - di: *

C2
- ca - ta mun - di, qui tol - lis pec - ca - ta mun - di:

T
mun - - - di, mun - di:

B
- di:

60 (♩ = ♩.)

* i.e. about half as fast again (MS ϕ)

M
mi - se - re - re no - -

C1
mi - se - re - re no - - - -

C2
mi - se - re - re

T
mi - se - re - - re no - - - -

B

M
- - - - -

C1
- - - - -

C2
no - - - - -

T
- - - bis,

B
mi - se - re - re no - - - -

M 75

C1

C2

T
mi - se - re - re - no

B

M 80 (♩ = ♩)

C1 bis.

C2 bis.

T bis.

B bis.

M
A - gnus De - i, qui tol - lis pec - ca - ta mun - -

C1
A - gnus De - i, qui tol - lis pec - ca - ta mun - -

C2
A - gnus De - i, qui tol - lis pec - ca - ta mun - -

T
A - gnus De - i, qui tol - lis pec - ca - ta mun - -

B
A - gnus De - i, qui tol - lis pec - ca - ta mun - -

M
(d. = d) 90
- - di: do - na no - bis pa - - -

C1
- - di: - - -

C2
- - di: do - na no - bis pa - - -

T
- - di: do - na no - bis

B
- - di: do - na no - bis pa -

