

# CONSORT

Herausgegeben von  
F. J. Giesbert

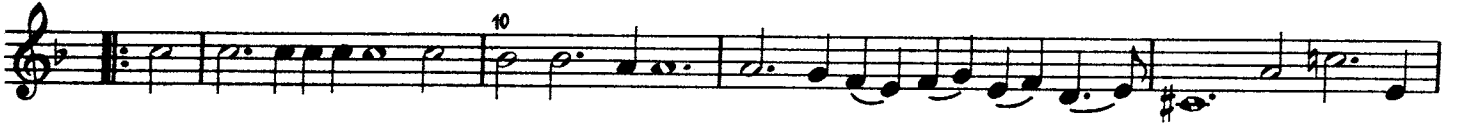
## 4. SUITE F dur

Math. Locke  
(etwa 1610-1677)

### 13. Fantasie

# Alt (Violino II)

## 14. Courante



## 15. Ayre



## 16. Sarabande



*Schluss (conclude)*

5. SUITE g moll

17. Fantasie

The musical score for '17. Fantasie' is written in G minor (one flat) and common time. It consists of ten staves of music. The first staff begins with a treble clef, a key signature of one flat, and a common time signature. The melody starts with a whole rest, followed by a series of eighth and quarter notes. Measure numbers 1, 5, 10, 15, 20, 25, 30, 35, 40, 45, 50, and 55 are indicated above the staves. The piece concludes with a double bar line and repeat dots at the end of the tenth staff.





## Alt (Violino II)

## 6. SUITE G dur

## 21. Fantasie

4 5 10 15 20 30 35 40 45 50 55 60

# Alt (Violino II)



Musical staff 1, measures 65-70. The staff contains a sequence of eighth and sixteenth notes in a treble clef with a key signature of one sharp (F#).



Musical staff 2, measures 71-75. The staff continues the melodic line with various rhythmic values.



Musical staff 3, measures 76-80. The staff features a mix of eighth and sixteenth notes.



Musical staff 4, measures 81-85. The staff shows a continuation of the melodic development.



Musical staff 5, measures 86-90. The staff contains a series of eighth notes.



Musical staff 6, measures 91-95. The staff features a sequence of eighth and sixteenth notes.



Musical staff 7, measures 96-99. The staff concludes the first section with a final note.

## 22. Courante



Musical staff 8, measures 1-4. The staff begins the second section in 3/4 time with a repeat sign.



Musical staff 9, measures 5-10. The staff continues the melodic line of the Courante.



Musical staff 10, measures 11-15. The staff features a sequence of eighth notes.



Musical staff 11, measures 16-17. The staff concludes the second section with a final note.

# Alt (Violino II)

## 23. Ayre

Musical score for '23. Ayre' in G major, 3/4 time. The piece consists of five staves of music. Measure numbers 5, 10, 15, 20, and 24 are indicated. The notation includes various rhythmic values such as eighth and sixteenth notes, and rests.

## 24. Sarabande

Musical score for '24. Sarabande' in G major, 3/4 time. The piece consists of five staves of music. Measure numbers 5, 10, 9, 12, and 7 are indicated. The notation includes various rhythmic values such as eighth and sixteenth notes, and rests. The word 'Schluss' is written below the first staff of this section.