

Oboe 2<sup>do</sup>

Preludio, Corale e Fuga

Op. 24 Respighi

# Preludio

Deserto

Presto

20

(1) *pp.*

*p.*

(2) 18

5 *f.* *dim.*

(3) 9

##

*f.* *dim<sup>o</sup>*

*mf. p.* *mf.* *ppoco* *a poco*

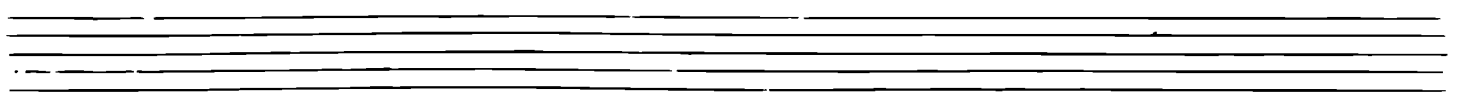
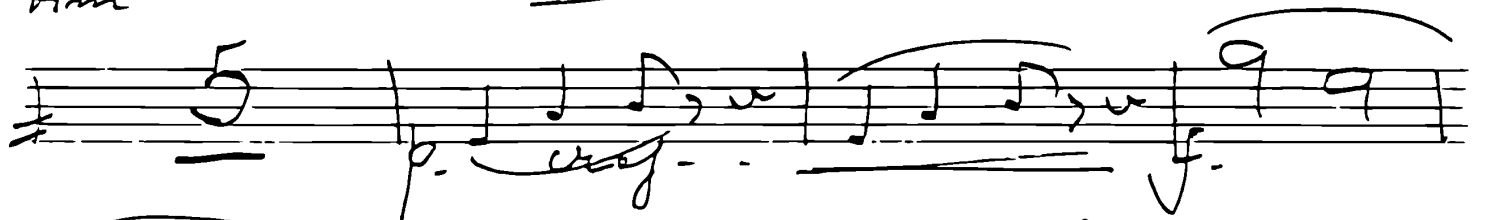
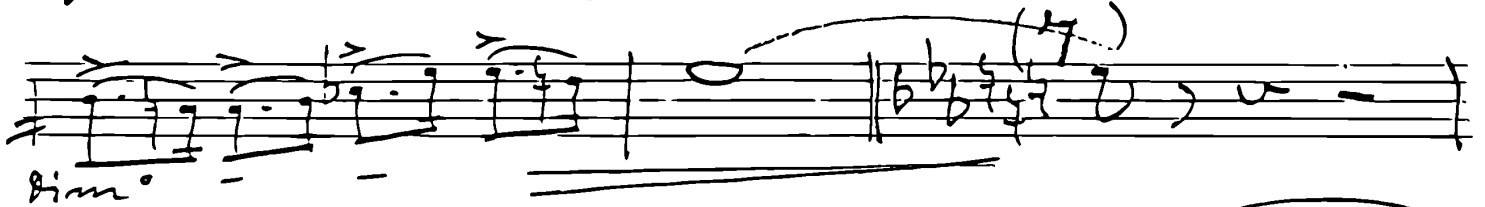
*mf.* *mf.*

*mf.*

*f.* *rit<sup>o</sup> molto*

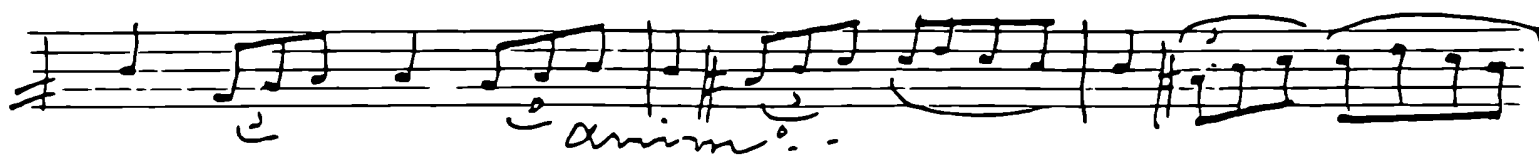
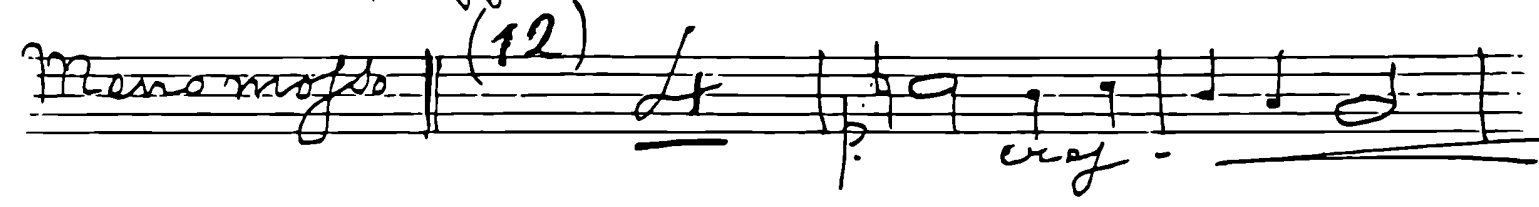
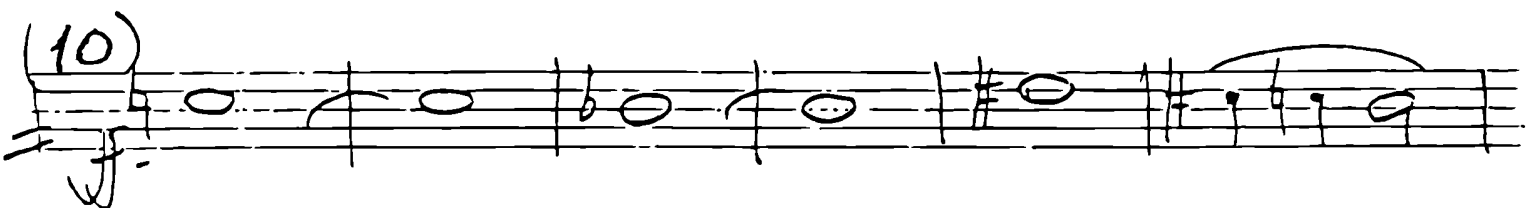
Corale *lento* *Segue*

4  
(5)  $b b b b b b^b$



Lento assai (8)

6. ##



*rit:* - - - (13)

*dim:* - - - (14)

*mf* *f.* *3* *cref* - -

*cref* - - - *f.* *dim:*

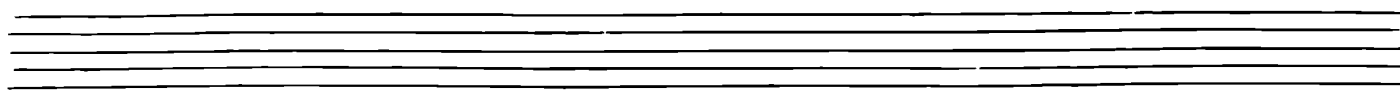
*p.* *1:6: (15)* *pp.*

*Molto soft:* *3* *f.*

*p.*

(16) *mf* *cref:* - - - *f.*

*3* *v. s.*



*Allegro* ||  $\frac{2}{2}$  (17) 16

(18) 2 (19) 6

*Piu mosso*

*p. cresc.*

*f. rit.*



Handwritten musical notation on a single staff. A slur covers the first seven notes. The word "rit." is written above the eighth note. The staff ends with a double bar line.

Largamente

Handwritten musical notation on a single staff. It begins with a key signature of three sharps (F#, C#, G#) and a double bar line. The notation consists of a series of quarter notes: G#4, A4, B4, C5, B4, A4, G#4.

Handwritten musical notation on a single staff. It begins with a whole rest, followed by quarter notes: G#4, A4, B4, C5, B4, A4, G#4. Slurs are placed over the pairs (B4, C5), (C5, B4), and (A4, G#4).

Handwritten musical notation on a single staff. It consists of a series of quarter notes: G#4, A4, B4, C5, B4, A4, G#4, F#4, E4, D4.

(19)

Handwritten musical notation on a single staff. It consists of a series of quarter notes: G#4, A4, B4, C5, B4, A4, G#4, F#4, E4, D4.

Handwritten musical notation on a single staff. It consists of a series of quarter notes: G#4, A4, B4, C5, B4, A4, G#4, F#4, E4, D4.

Handwritten musical notation on a single staff. It consists of a series of quarter notes: G#4, A4, B4, C5, B4, A4, G#4, F#4, E4, D4. Slurs are placed over the pairs (G#4, A4), (B4, C5), and (A4, G#4).

(20)

Handwritten musical notation on a single staff. It consists of a series of quarter notes: G#4, A4, B4, C5, B4, A4, G#4, F#4, E4, D4.

Handwritten musical notation on a single staff. It consists of a series of quarter notes: G#4, A4, B4, C5, B4, A4, G#4, F#4, E4, D4. Slurs are placed over the pairs (G#4, A4), (B4, C5), and (A4, G#4).

Handwritten musical notation on a single staff. It consists of a series of quarter notes: G#4, A4, B4, C5, B4, A4, G#4, F#4, E4, D4. Slurs are placed over the pairs (G#4, A4), (B4, C5), and (A4, G#4).

V.S.

