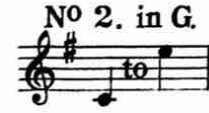


Courtesy Greenham



DEDICATED TO
MADAME ADA CROSSLEY.

A SONG OF PRAISE



The Words by

KATHLEEN LEE



The Music by

THERESA BENEY

PRICE 2/6 NET.

BOOSEY & CO., LTD.
295, REGENT STREET, LONDON, W.
AND
STEINWAY HALL, 111-113, WEST 57TH STREET, NEW YORK.

THE PUBLIC PERFORMANCE OF ANY PARODIED VERSION OF THIS COMPOSITION IS STRICTLY PROHIBITED.

COPYRIGHT 1929 BY BOOSEY & CO. LTD.



A SONG OF PRAISE.

When I behold the limpid light,
Blessed be God Who gave me sight.
When a bird's song enchants mine ear,
Blessed be God Who made me hear.

When I walk under golden trees,
Blessed be God for strength and ease.
When parching thirst my throat doth sear,
Blessed be God for water clear.

When the wild clam'rous tempests roam,
Blessed be God for my safe home.
When in my books I have delight,
Blessed be God for those who write.

When friends by true affection prove
That kindness their hearts doth move.
And may they ever blessed be,
Through whom Thou, Lord, hast blessed me.

Kathleen Lee.

A SONG OF PRAISE.

Words by
KATHLEEN LEE.

Music by
THERESA BENEY.

Andante con moto.

PIANO.

The piano introduction consists of two staves. The right hand starts with a series of chords and moving lines, while the left hand plays a steady eighth-note accompaniment. Dynamics include *f* (forte), *p* (piano), and *rit.* (ritardando).

mp

When I be-hold the lim - pid light, Bless - ed be God Who

The first system of the vocal melody is on a single staff, with the piano accompaniment on two staves below. The piano part features arpeggiated chords. Dynamics include *mp* (mezzo-piano).

mf

gave me sight. When a bird's song en - chants mine ear,

The second system continues the vocal melody and piano accompaniment. Dynamics include *mf* (mezzo-forte).

f *mp*

Bless - ed be God Who made me hear.

The third system concludes the piece. The piano accompaniment ends with a series of chords and a final cadence. Dynamics include *f* (forte) and *pp* (pianissimo). Performance markings include *dim.* (diminuendo) and *rit.* (ritardando).

When I walk un - der gold - - en trees,

a tempo
pp sempre legato

Bless - ed be God for strength and ease.

When parch - ing thirst my throat doth sear,

mp
Bless - ed be God for wa - - ter clear.

p *rall.* *pp*

f
When the wild clam - 'rous tem - pests roam,

Bless - ed be God for my safe home.

dim.

dim. *p*

mp
When in my books I have de - light, Bless - ed be God for

mp *cresc.* *mf* *p*

rit.
those who write.

rit. *mf* *molto rall.*

When

p

friends by true af - fec - tion prove That kind - li - ness their

pp

hearts doth move, Oh, may they e - ver bless - ed be,

cresc.

cresc.

Through whom Thou, Lord, hast bless - ed

f

rit. *ff*

f a tempo

me.....

a tempo

cresc. *rall.*

ff

sf

