

Fagotto I

РОМЕО И ДЖУЛЬЕТТА

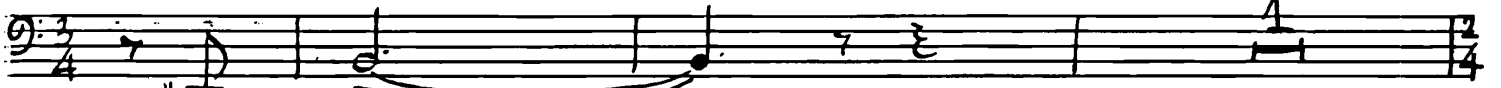
ТРЕТЬЯ СЮИТА

С. Прокофьев

1. Ромео у фонтана

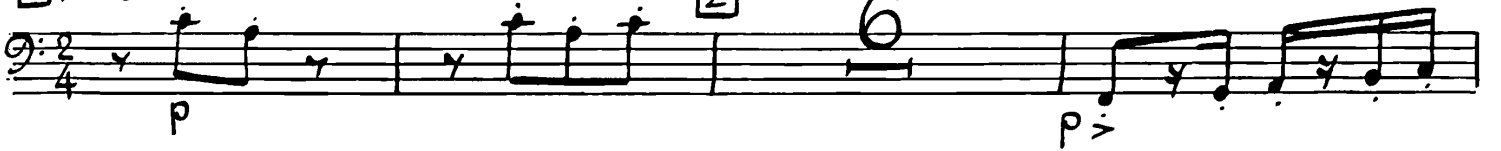
Andante assai

pochiss. rit.



1 Andante

2



3



4

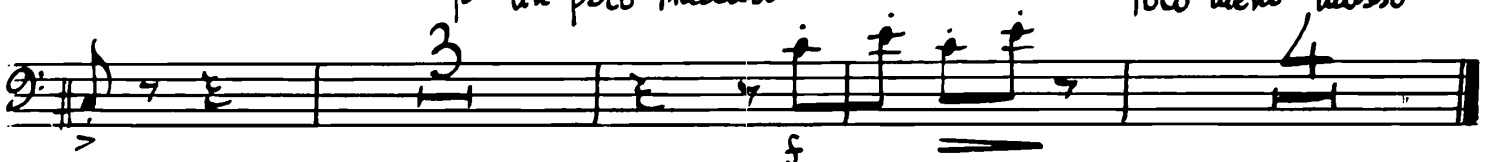


5



un poco marcato

Poco meno mosso



2. УТРЕННИЙ ТАНЕЦ

6 Allegro

2

7

2

8

9

poco meno
mp espress.

10

11 *Sempre*

3

55

55

12

6

31.1.06.1

2

4 13

First musical staff, bass clef, key signature of one sharp (F#). It contains a sequence of eighth notes grouped in pairs with slurs. A dynamic marking of *ss* is present below the first measure.

Second musical staff, bass clef, key signature of one sharp (F#). It contains a sequence of eighth notes grouped in pairs with slurs.

Third musical staff, bass clef, key signature of one sharp (F#). It contains a sequence of eighth notes grouped in pairs with slurs.

Fourth musical staff, bass clef, key signature of one sharp (F#). It contains a sequence of eighth notes grouped in pairs with slurs.

Fifth musical staff, bass clef, key signature of one sharp (F#). It contains a sequence of eighth notes grouped in pairs with slurs. A dynamic marking of *ss* is present below the first measure.

Sixth musical staff, bass clef, key signature of one sharp (F#). It contains a sequence of eighth notes grouped in pairs with slurs. A measure rest is present. A boxed measure number 14 is above the staff. The key signature changes to one sharp and one flat (F# and Bb).

Seventh musical staff, bass clef, key signature of one sharp and one flat (F# and Bb). It contains a sequence of eighth notes grouped in pairs with slurs.

Eighth musical staff, bass clef, key signature of one sharp and one flat (F# and Bb). It contains a sequence of eighth notes grouped in pairs with slurs. A dynamic marking of *f* is present below the first measure.

Ninth musical staff, bass clef, key signature of one sharp and one flat (F# and Bb). It contains a sequence of eighth notes grouped in pairs with slurs. A dynamic marking of *f* is present below the first measure.

Tenth musical staff, bass clef, key signature of one sharp and one flat (F# and Bb). It contains a sequence of eighth notes grouped in pairs with slurs. A dynamic marking of *f* is present below the first measure.

Eleventh musical staff, bass clef, key signature of one sharp and one flat (F# and Bb). It contains a sequence of quarter notes. A boxed measure number 15 is above the staff. A dynamic marking of *f* is present below the first measure.

Twelfth musical staff, bass clef, key signature of one sharp and one flat (F# and Bb). It contains a sequence of eighth notes grouped in pairs with slurs. Dynamic markings of *ss*, *vo*, and *ss* are present below the staff.

3. Джульетта

16 Moderato, quasi allegretto 17 Andante dolce

V-no I Solo

cl. 8

poco ritard.

19 Allegretto

20 Sag. I

mp

mp

p

f

f

f

accelerando

23 Andante dolce

p

cl. 8

25 Fl. a2 6

poco rit.

2

6 [26] Moderato, quasi allegretto

3 solo p 5 27 5

Corni 3 p 1

4. Кормилица

[28] Andante assai. Scherzando

3 p 2

mp p 20

p 1

p 2

[30] p mp

mf p mp

cresc. s

1 [31] 1 C-fag. 3

p 2 [32] 1

7

p

2

5. Утренняя серенада

tacet

6. Смерть Джульетты

42 *Larghetto*

p

44

mp

45

p

46

p

mp

p

5

Blank musical staff

8

47

Musical notation for measures 46 and 47. Measure 46 begins with a bass clef and a whole rest. The melody starts in measure 47 with a quarter note G2, followed by eighth notes A2 and B2, then a quarter note C3. A slur covers the next two notes, D3 and E3. Measure 47 ends with a quarter note F3. Dynamics include *mf cresc.* and *f*. A *ritard.* marking is placed above the staff.

48 a tempo

Musical notation for measures 48, 49, and 50. Measure 48 contains a whole rest with a sharp sign (#) above it. Measure 49 begins with a bass clef and a whole rest. The melody starts in measure 50 with a quarter note G2, followed by eighth notes A2 and B2, then a quarter note C3. A slur covers the next two notes, D3 and E3. Measure 50 ends with a quarter note F3. Dynamics include *pp*, *ritard.*, *Meno mosso*, and *pp*. A *pp espress* marking is placed below the staff, and an *mp* marking is placed below the staff.

Eight empty musical staves, each consisting of five horizontal lines, provided for further notation.