

Kontrabaß

Jan BRANDTS BUYS (1868-1933)

POETISCHER SPAZIERGANG

(Poetical Excursion)

Op. 50 (1931)

Kontrabaß

POETISCHER SPAZIERGANG

(Poetical Excursion)

Op. 50 (1931)

1. Das Bächlein

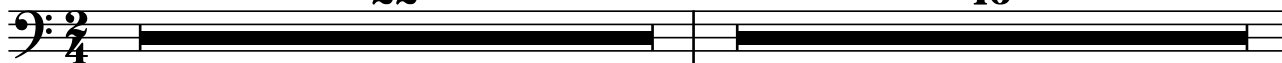
The rivulet

Murmelnd (♩ = c. 100)

22

A

16



39 **B** **12** **C** 1(-15) pizz. 2 3 4

Vla. *pp*

59 5 6 7 8 9 10 11 12

f *p*

67 **D** arco *pp*

75 pizz. *sempre pp*

83 **E** *pp*

93

104 **F**

114

f *decresc.* *pp*

G div.: 1 Baß/
die Übrigen

123

pp *calando*

2. Hirten in öder Einsamkeit

Shepherds in barren country

Traurig ♩ = 66
8

A

p *sfz* *sfz*

15

f *p* *p* *sfz* *sfz*

23

B

f *sfz* *sfz* *ff*

31

8 **C** 6 **D**

p *sfz* *sfz* *fp*

52

E 7 pizz. arco

p *pp* *sfz* *sfz*

65

F 8 pizz. arco

pp *f* *pp*

Vln. I

3. Begegnung

Encounter

Andante con espressione (♩ = 72)

pp

9 **A** **B**

cresc. *mf*

19 **allarg.**

f *mp*

28 **C** [a tempo]

f marc. *f*

37 **D**

ff pizz. *pp*

48 arco

arco

57 **E** **allarg.**

mf *f* *mp*

67 **F** Etwas langsamer

p *pp*

77 **calando**

1(-7) 2 3 4 5 6 7

ppp

4. Das Grammophon in der Schenke

Grammophon in the inn

Lebhaft (♩ = 132)

16 **A** 16 **B** 16

49 **C** 12 **D** 14

79 **E** Kl.1 pizz. *f*

86

94 **F** 1(-6) 2 3 4 5 6 *pp*

103

112 **G** *mf* *f*

121 *ff*

5. Was die Schloßruine erzählt

What the old ruin has to tell

Träumerisch (♩ = c. 66)

poco rit.

8 A 12

25 B [a tempo]
(arco)

33 C *ppp* *ppp* *Fine*

[41] C *f* **2**

50 *f* *p*

56 D *pp* *pizz.* *p* *rit.* *pp* *div.* *calando.....in tempo*

65 *D.C. al Fine*

6. Ein wunderlicher Passant

A queer passer-by

Allegro ♩ = 76

Vc.

8 A *pp* *pizz.* 1(-8)

15 *sempre pp*

22 B

28

f

Detailed description: Musical staff 22-28. Bass clef, key signature of two flats. Measure 22 starts with a half note G2, followed by quarter notes G2, F2, E2, D2, C2, B1, A1, G1. Measure 23 has a half note G1, quarter notes F1, E1, D1, C1, B0, A0, G0. Measure 24 has a half note G0, quarter notes F0, E0, D0, C0, B-1, A-1, G-1. Measure 25 has a half note G-1, quarter notes F-1, E-1, D-1, C-1, B-2, A-2, G-2. Measure 26 has a half note G-2, quarter notes F-2, E-2, D-2, C-2, B-3, A-3, G-3. Measure 27 has a half note G-3, quarter notes F-3, E-3, D-3, C-3, B-4, A-4, G-4. Measure 28 has a half note G-4, quarter notes F-4, E-4, D-4, C-4, B-5, A-5, G-5. Dynamics: *f*. Performance markings: accents on measures 22, 23, and 24. A hairpin crescendo spans from measure 22 to 28.

29

36

Detailed description: Musical staff 29-36. Bass clef, key signature of two flats. Measure 29 has a half note G1, quarter notes F1, E1, D1, C1, B0, A0, G0. Measure 30 has a half note G0, quarter notes F0, E0, D0, C0, B-1, A-1, G-1. Measure 31 has a half note G-1, quarter notes F-1, E-1, D-1, C-1, B-2, A-2, G-2. Measure 32 has a half note G-2, quarter notes F-2, E-2, D-2, C-2, B-3, A-3, G-3. Measure 33 has a half note G-3, quarter notes F-3, E-3, D-3, C-3, B-4, A-4, G-4. Measure 34 has a half note G-4, quarter notes F-4, E-4, D-4, C-4, B-5, A-5, G-5. Measure 35 has a half note G-5, quarter notes F-5, E-5, D-5, C-5, B-6, A-6, G-6. Measure 36 has a half note G-6, quarter notes F-6, E-6, D-6, C-6, B-7, A-7, G-7. Dynamics: *f*. Performance marking: accent on measure 36.

37

43

p *ff*

Detailed description: Musical staff 37-43. Bass clef, key signature of two flats. Measure 37 has a half note G1, quarter notes F1, E1, D1, C1, B0, A0, G0. Measure 38 has a half note G0, quarter notes F0, E0, D0, C0, B-1, A-1, G-1. Measure 39 has a half note G-1, quarter notes F-1, E-1, D-1, C-1, B-2, A-2, G-2. Measure 40 has a half note G-2, quarter notes F-2, E-2, D-2, C-2, B-3, A-3, G-3. Measure 41 has a half note G-3, quarter notes F-3, E-3, D-3, C-3, B-4, A-4, G-4. Measure 42 has a half note G-4, quarter notes F-4, E-4, D-4, C-4, B-5, A-5, G-5. Measure 43 has a half note G-5, quarter notes F-5, E-5, D-5, C-5, B-6, A-6, G-6. Dynamics: *p* at measure 37, *ff* at measure 43. Performance marking: hairpin crescendo from measure 37 to 43.

44 C

51

ff *pp*

Detailed description: Musical staff 44-51. Bass clef, key signature of two flats. Measure 44 has a half note G1, quarter notes F1, E1, D1, C1, B0, A0, G0. Measure 45 has a half note G0, quarter notes F0, E0, D0, C0, B-1, A-1, G-1. Measure 46 has a half note G-1, quarter notes F-1, E-1, D-1, C-1, B-2, A-2, G-2. Measure 47 has a half note G-2, quarter notes F-2, E-2, D-2, C-2, B-3, A-3, G-3. Measure 48 has a half note G-3, quarter notes F-3, E-3, D-3, C-3, B-4, A-4, G-4. Measure 49 has a half note G-4, quarter notes F-4, E-4, D-4, C-4, B-5, A-5, G-5. Measure 50 has a half note G-5, quarter notes F-5, E-5, D-5, C-5, B-6, A-6, G-6. Measure 51 has a half note G-6, quarter notes F-6, E-6, D-6, C-6, B-7, A-7, G-7. Dynamics: *ff* at measure 44, *pp* at measure 51. Performance markings: accents on measures 45, 46, 47, 48, 49, and 50.

52

58

Detailed description: Musical staff 52-58. Bass clef, key signature of two flats. Measure 52 has a half note G1, quarter notes F1, E1, D1, C1, B0, A0, G0. Measure 53 has a half note G0, quarter notes F0, E0, D0, C0, B-1, A-1, G-1. Measure 54 has a half note G-1, quarter notes F-1, E-1, D-1, C-1, B-2, A-2, G-2. Measure 55 has a half note G-2, quarter notes F-2, E-2, D-2, C-2, B-3, A-3, G-3. Measure 56 has a half note G-3, quarter notes F-3, E-3, D-3, C-3, B-4, A-4, G-4. Measure 57 has a half note G-4, quarter notes F-4, E-4, D-4, C-4, B-5, A-5, G-5. Measure 58 has a half note G-5, quarter notes F-5, E-5, D-5, C-5, B-6, A-6, G-6.

59 D

65

p

Detailed description: Musical staff 59-65. Bass clef, key signature of two flats. Measure 59 has a half note G1, quarter notes F1, E1, D1, C1, B0, A0, G0. Measure 60 has a half note G0, quarter notes F0, E0, D0, C0, B-1, A-1, G-1. Measure 61 has a half note G-1, quarter notes F-1, E-1, D-1, C-1, B-2, A-2, G-2. Measure 62 has a half note G-2, quarter notes F-2, E-2, D-2, C-2, B-3, A-3, G-3. Measure 63 has a half note G-3, quarter notes F-3, E-3, D-3, C-3, B-4, A-4, G-4. Measure 64 has a half note G-4, quarter notes F-4, E-4, D-4, C-4, B-5, A-5, G-5. Measure 65 has a half note G-5, quarter notes F-5, E-5, D-5, C-5, B-6, A-6, G-6. Dynamics: *p*.

66

72

f *pp*

Detailed description: Musical staff 66-72. Bass clef, key signature of two flats. Measure 66 has a half note G1, quarter notes F1, E1, D1, C1, B0, A0, G0. Measure 67 has a half note G0, quarter notes F0, E0, D0, C0, B-1, A-1, G-1. Measure 68 has a half note G-1, quarter notes F-1, E-1, D-1, C-1, B-2, A-2, G-2. Measure 69 has a half note G-2, quarter notes F-2, E-2, D-2, C-2, B-3, A-3, G-3. Measure 70 has a half note G-3, quarter notes F-3, E-3, D-3, C-3, B-4, A-4, G-4. Measure 71 has a half note G-4, quarter notes F-4, E-4, D-4, C-4, B-5, A-5, G-5. Measure 72 has a half note G-5, quarter notes F-5, E-5, D-5, C-5, B-6, A-6, G-6. Dynamics: *f* at measure 66, *pp* at measure 72. Performance marking: hairpin crescendo from measure 66 to 72.

73 E 7 (pizz.)

79

f *pp*

Detailed description: Musical staff 73-79. Bass clef, key signature of two flats. Measure 73 has a half note G1, quarter notes F1, E1, D1, C1, B0, A0, G0. Measure 74 has a half note G0, quarter notes F0, E0, D0, C0, B-1, A-1, G-1. Measure 75 has a half note G-1, quarter notes F-1, E-1, D-1, C-1, B-2, A-2, G-2. Measure 76 has a half note G-2, quarter notes F-2, E-2, D-2, C-2, B-3, A-3, G-3. Measure 77 has a half note G-3, quarter notes F-3, E-3, D-3, C-3, B-4, A-4, G-4. Measure 78 has a half note G-4, quarter notes F-4, E-4, D-4, C-4, B-5, A-5, G-5. Measure 79 has a half note G-5, quarter notes F-5, E-5, D-5, C-5, B-6, A-6, G-6. Dynamics: *f* at measure 73, *pp* at measure 79. Performance marking: hairpin crescendo from measure 73 to 79. A 7-measure rest is indicated above measure 74.

86 F

91

ppp

Detailed description: Musical staff 86-91. Bass clef, key signature of two flats. Measure 86 has a half note G1, quarter notes F1, E1, D1, C1, B0, A0, G0. Measure 87 has a half note G0, quarter notes F0, E0, D0, C0, B-1, A-1, G-1. Measure 88 has a half note G-1, quarter notes F-1, E-1, D-1, C-1, B-2, A-2, G-2. Measure 89 has a half note G-2, quarter notes F-2, E-2, D-2, C-2, B-3, A-3, G-3. Measure 90 has a half note G-3, quarter notes F-3, E-3, D-3, C-3, B-4, A-4, G-4. Measure 91 has a half note G-4, quarter notes F-4, E-4, D-4, C-4, B-5, A-5, G-5. Dynamics: *ppp*.

92

98

f

Detailed description: Musical staff 92-98. Bass clef, key signature of two flats. Measure 92 has a half note G1, quarter notes F1, E1, D1, C1, B0, A0, G0. Measure 93 has a half note G0, quarter notes F0, E0, D0, C0, B-1, A-1, G-1. Measure 94 has a half note G-1, quarter notes F-1, E-1, D-1, C-1, B-2, A-2, G-2. Measure 95 has a half note G-2, quarter notes F-2, E-2, D-2, C-2, B-3, A-3, G-3. Measure 96 has a half note G-3, quarter notes F-3, E-3, D-3, C-3, B-4, A-4, G-4. Measure 97 has a half note G-4, quarter notes F-4, E-4, D-4, C-4, B-5, A-5, G-5. Measure 98 has a half note G-5, quarter notes F-5, E-5, D-5, C-5, B-6, A-6, G-6. Dynamics: *f*. Performance marking: accent on measure 98.

7. Vorüberziehendes Gewitter

*Passing thunderstorm*Sausend ($\text{♩} = 160$)

pizz.

pp

9

17

A

25

33

B

p cresc. poco a poco

41

arco

f *ff*

49

C

ff marcatisimo

8

65

D

ff

8

81

E

ff

89 rit.

fff

99 **F** Mehr als doppelt so langsam (♩ = 66)

pp

109 **G**

f

117

f *pp*

125 **H**

f

133

pp

141 **J**

f *p*

149 **K** Ruhig

pp *pp*

157

pp

167 **L** 16

pp