

Flauto traverso

Suite

D-Dur / Ré majeur / D major

Herausgegeben von
Hugo Ruf

Johann Ludwig Krebs

(Ouvertüre)

Con discrezione

5

9

12

16

20

26

32

38

43

49

56

64

70

77

84

90

97

103

Eco

108 *Lento*

113

117

120

1. *Vivace* 2.

Rejouissance

4 *f*

7 *Eco*

13

18

23

29 *p* *cresc.* *f*

Menuet I

4 *mf* *p* *mf*

9 *p* *mf*

17 *p* *cresc.* *mf*

Menuet II

4 *p*

9

Menuet I d. c.

Bourrée

Musical score for Bourrée, measures 1-16. The piece is in G major and 3/4 time. It begins with a forte (*f*) dynamic. The melody consists of eighth and sixteenth notes with various ornaments. Measure 6 includes two trills (*tr*). Measure 11 features a trill (*tr*) and a fermata. Measure 16 concludes with a first ending (1.) and a second ending (2.).

Gigue

Musical score for Gigue, measures 1-34. The piece is in G major and 6/8 time. It begins with a forte (*f*) dynamic. The melody is characterized by eighth and sixteenth notes with frequent slurs and accents. Measure 17 starts with a repeat sign. Measure 22 features a fermata. Measure 28 includes a fermata and a trill. Measure 34 ends with a repeat sign.

Violino

Suite

D-Dur / Ré majeur / D major

Herausgegeben von
Hugo Ruf

Johann Ludwig Krebs

(Ouvertüre)

Con discrezione

f 3

5

9

13 3 3

17 *tr* 1. 3/4

20 2. *Vivace* *mf* *tr* *tr*

26

33 *tr* *tr* *tr*

40 *tr*

47 *tr* *tr* *tr*

54

62

69

77

84

92

100

Eco

108 Lento

f

113

117

120

1. 3/4 2. Vivace C

Rejouissance

Musical score for Rejouissance, measures 4-31. The piece is in G major and 2/4 time. It features a lively melody with various dynamics and articulations.

- Measure 4: *f*
- Measure 7: *Eco*
- Measure 13: *f*
- Measure 19: *f*
- Measure 25: *p* and *cresc.*
- Measure 31: *f*

Menuet I

Musical score for Menuet I, measures 4-17. The piece is in G major and 3/4 time. It features a graceful melody with trills and dynamic markings.

- Measure 4: *mf*
- Measure 9: *p* and *mf*
- Measure 17: *p*, *cresc.*, and *mf*

Menuet II

Musical score for Menuet II, measures 4-9. The piece is in G major and 3/4 time. It features a graceful melody with trills and dynamic markings.

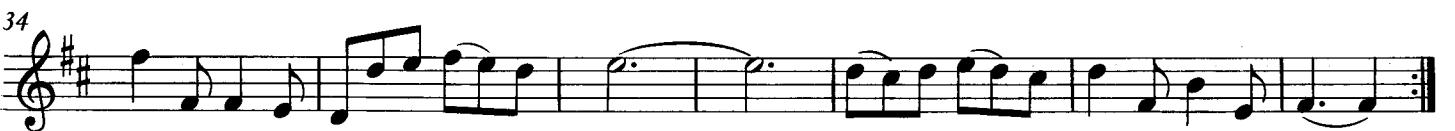
- Measure 4: *p*
- Measure 9: *p*

Menuet I d. c.

Bourrée



Gigue



Violoncello
(Viola da gamba)

Suite

D-Dur / Ré majeur / D major

Herausgegeben von
Hugo Ruf

Johann Ludwig Krebs

(Ouvertüre)
Con discrezione

f

3

5

9

14

3

3

3

18

1.

tr

20

2. **Vivace**

4

mf

tr

tr

30

39

48

55

tr

tr

62

71

78

84

91

97

102

Eco

108 Lento

f

3

112

116

120

1. Vivace 2.

Rejouissance

4 *f*

7 *Eco*

13

19

25 *p* *cresc.*

31 *f* *tr.*

Menuet I

4 *mf* *p* *mf* 1. 2.

9 *p* *mf*

18 *p* *cresc.* *mf* 1. 2.

Menuet II

4 *p*

7 4

Menuet I d. c.

Bourrée

f

6

11

16

1. 2.

Gigue

f

6

11

17

22

28

35