

VIERZEHN KANONS

über die ersten acht Fundamentalnoten
der Aria aus den Goldberg-Variationen

BWV 1087

Verschiedene Canones

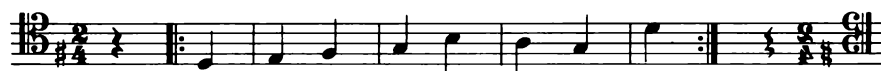
über die ersten acht Fundamental-Noten vorheriger Arie

BWV 1087

1. Canon simplex



2. all' roverscio



3. Beide vorigen Canones zugleich, motu recto e contrario



4. motu contrario e recto



5. Canon duplex à 4



6. Canon simplex über besagtes Fundament à 3



7. Idem à 3

8. Canon simplex à 3, il soggetto in Alto

9. Canon in unisono post semifusam à 3

10. Alio modo, per syncopationes et per ligaturas à 2

Evolutio

11. Canon duplex übers Fundament à 5

Musical score for Canon duplex übers Fundament à 5. The score is written for three staves: Treble, Middle, and Bass. The key signature is one sharp (F#) and the time signature is 2/4. The piece consists of two measures, each with a repeat sign. The melody in the Treble staff is a sequence of eighth notes: G4, A4, B4, C5, B4, A4, G4. The Middle staff plays a similar sequence: F#4, G4, A4, B4, A4, G4, F#4. The Bass staff provides a simple harmonic accompaniment with quarter notes: G3, F#3, E3, D3, C3, B2, A2.

12. Canon duplex über besagte Fundamental - Noten à 5

Musical score for Canon duplex über besagte Fundamental - Noten à 5. The score is written for three staves: Treble, Middle, and Bass. The key signature is one sharp (F#) and the time signature is 6/8. The piece consists of two measures, each with a repeat sign. The Treble staff features a complex melodic line with eighth and sixteenth notes. The Middle staff plays a similar line, and the Bass staff provides a simple harmonic accompaniment with quarter notes: G3, F#3, E3, D3, C3, B2, A2.

13. Canon triplex à 6

Musical score for Canon triplex à 6. The score is written for three staves: Treble, Middle, and Bass. The key signature is one sharp (F#) and the time signature is 6/8. The piece consists of two measures, each with a repeat sign. The Treble staff plays a sequence of eighth notes: G4, A4, B4, C5, B4, A4, G4. The Middle staff plays a similar sequence: F#4, G4, A4, B4, A4, G4, F#4. The Bass staff provides a simple harmonic accompaniment with quarter notes: G3, F#3, E3, D3, C3, B2, A2.

14. Canon à 4 per Augmentationem et Diminutionem

Musical score for Canon à 4 per Augmentationem et Diminutionem. The score is written for two staves: Treble and Bass. The key signature is one sharp (F#) and the time signature is 6/8. The piece consists of two measures, each with a repeat sign. The Treble staff plays a sequence of eighth notes: G4, A4, B4, C5, B4, A4, G4. The Bass staff plays a similar sequence: F#4, G4, A4, B4, A4, G4, F#4.

Et cetera

