

Snare Drum

Bacchus et Ariane Op.43

Selection from Suite No.2

Roussel, Albert(1869- 1937)
Arranged by Nakatani, Yuichi

A Andante ♩ = 60 Plus calme Lento ♩ = 48 poco animato

B Meno Lento ♩ = 66

C Moderato e pesante ♩ = 80 (6+4)

D Allegro moderato

E Allegro brillante ♩ = 120 Bacchanale

F 7 7 9 8 8 8

G 9 *ff* > *mf*

H 2

I *f* *fff*

J 17 3 6 4 17 6 4 17 6 *mf* *f*

K Presto ♩ = 72

L 12 10 18 18 16 17 6

M 7 18

N 7 18 *mp*

O 7 *f*

P *cresc.* *f*

Q *cresc.* *ff*

R *ff*

S 5

206 *f* 11 *mf*

227 *mf*

235 *mf* *f* **T**

U 245 *ff* Cym. **V** 9 3 2

265 *ff*

W 277 *f* Glocken. 6 3 3 3 3 3 3

X 285 Cymbal *ff* **Y** 6 3 *ff* Bass Drum *ff* *ff*

299 *fff* **Z** 3

Bacchus et Ariane Op.43

Selection from Suite No.2

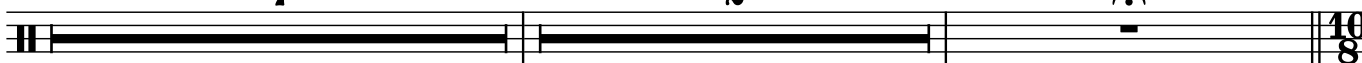
Triangle,
Tambourine,
Tamtam
Celesta
Glockenspiele

Roussel, Albert(1869- 1937)
Arranged by Nakatani, Yuichi

Andante $\text{♩} = 60$ **Plus calme** **A** **Lento** $\text{♩} = 48$ **poco animato**

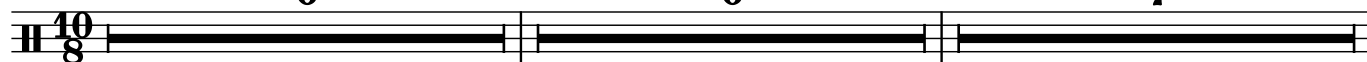


B **Meno Lento** $\text{♩} = 66$ **Allegro moderato**



C **Moderato e pesante**

39 $\text{♩} = \text{♩} (6+4)$ **D** $\text{♩} = 80$ **E**

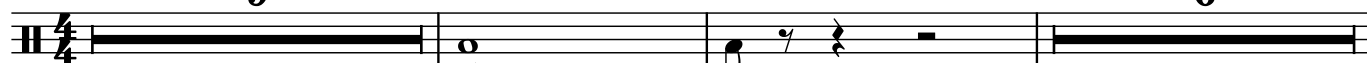


F (Celesta or Glockenspiele)



Allegro brillante $\text{♩} = 120$

G **Bacchanale** **Tamb.** **H**



ff **mf**



Tam tam **mf**



K **Tamb.**



2 Celesta or Glocken.

118 11

M *f* **N** **O** Presto $\text{♩} = 72$ **P** *f*

136 6 18 10 18

Q **R** Celesta or Glocken.

188 18 8 *f* 3 3 3 3 3 3 3 3

217 3 3 3 3 3 3 3 3

S Allegro molto $\text{♩} = 160$ **T** **U**

222 17 6 8

Tri. *ff* **V** *ff*

253 4 *f* *ff*

Tam tam

W Tamb. $\text{♩} = \text{♩}$

270 *ff* *mf*

280 *cresc.* *f*

X

285 *cresc.* *ff*

291 Tri. **Y**

297 **Z** 5