

Flûte

Messe modale en septuor

Neu gesetzte Stimme
zur Doblinger-Ausgabe
D.11.387 (1965)

pour Soprano, Contralto, Flûte et Quartuor à cordes (ou Orgue) · JA 136

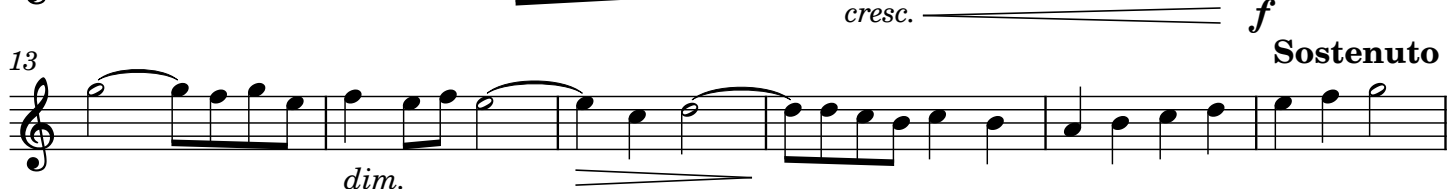
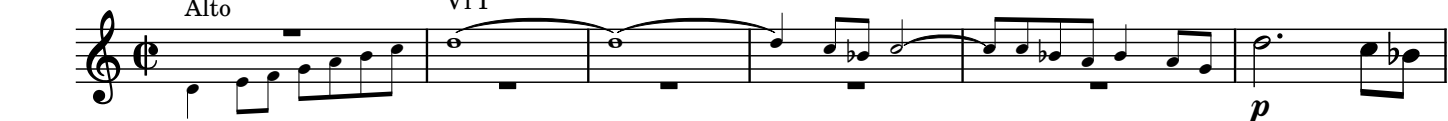
Kyrie

Jehan Alain
MCMXI - MCMXL

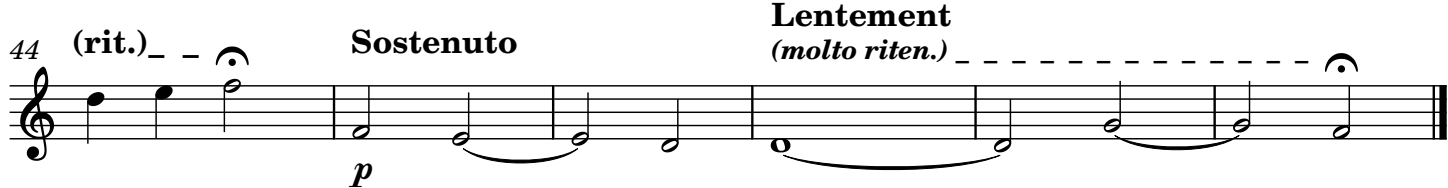
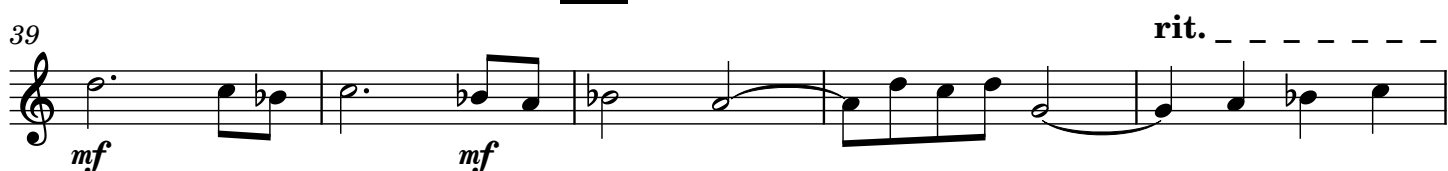
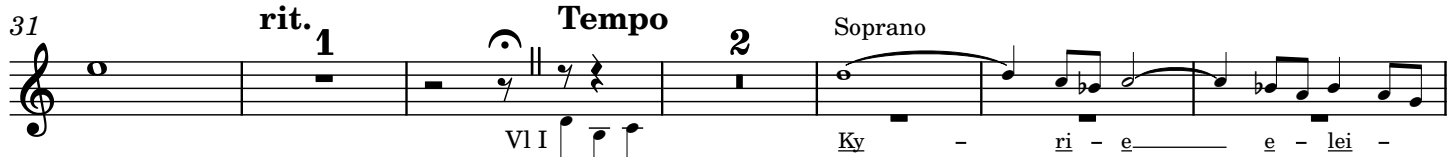
Allegro

Alto

VII

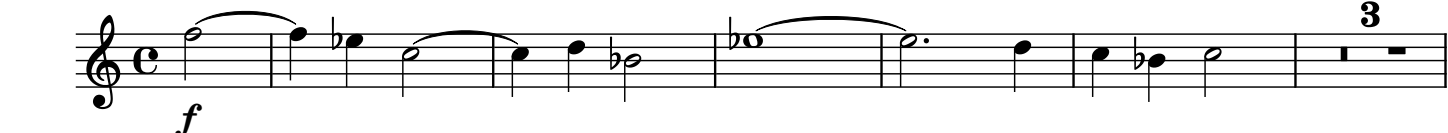


Sostenuto



Gloria

Animato



26 4

35 Contralto

tu - am. *mf* *cresc.*

42 *ff* 2 46 Contralto

dim. e rit. -----

u - ni - ge - ni - te, Je - su Chri - ste

50 *a tempo*

f

56 *Più lento e sostenuto* ----- **Tempo**

p Contralto

Qui

62 (Contralto)

tol - lis *p* *f*

69 *sans hâte poco rit.* ----- **Tempo**

76 1

f

83

89

ff

95 2 98

mf *poco a poco cresc.*

103 *Largo (à 4 tempo)* *Molto largo*

ff

Sanctus

Andantino

VI I

mf

6 VI I 13

f

17 2

ff

24

decresc. molto

Falls das Benedictus gespielt wird, Sprung von % bis ⊕

31a rit. ----- Tempo 2 35a Violon I molto rit. -----

(p)

Benedictus

⊕ 31b rit. ----- Tempo (*espressivo*) 2 35b

p

38b 39 1 2

mf *ff*

46

decresc.

53

rit. ----- Tempo

2 58 2 60 Violon I

p

Agnus Dei

Contralto (+Alto)

A - gnus *p*

7

Soprano (+Alto)

6 16 6

Soprano (+VI II)

A - gnus mi - se - re - re

25 (Soprano)

no - bis. *p* *espress.*

32 Contralto (+VI II) Soprano (+VI I)

A - gnus A - gnus De - i, qui tol - lis *f*

39

lentement

rall. -----

p *pp*