

Percussion 1  
Wood Block/Snare Drum

# Hot Sonata

## I.

Schulhoff/Johnson

$\text{♩} = 88$   
wood block

*mf*

7

*mf*

snare  $3+3+2$

12

$3+3+2$  *mp*  $3+3+2$  *mp*

16

*mp*  $3+3+2$   $5$  *tr* *mp*  $3+3+2$

**Poco animato**

25

2 wood block *mf*  $3+3+2$

33

$3+3+2$   $4$   $3+3+2$  snare *mp*

39

*tr* *tr*  $3+3+2$  *tr* *tr*

42

$4$   $3+3+2$  *mp*  $4$  2

Percussion 1, Wood Block/Snare Drum

47 w.b. snare  
 mf p  
 3+3+2 3+3+2

52  
 3+3+2 3+3+2 3+3+2

57 w.b.  
 mp

65

69

II.

73 ♩=174 snare tr  
 p < mp=p

83 tr  
 p mp

94

107

119 wood block  
*mf*

129

142 snare *f* tr~ tr~

152 tr~ tr~ tr~ tr~ tr~ tr~

161 (tr) *mf* *mf* *p*

172 *mp* *p* *mp*

183

195 wood block

III.

208 ♩=80 3 tr~ tr~ 2 tr~ tr~ 2

*p < sf* *p < sf* *p < sf* *p < sf*

219 tr~ tr~ 2 tr~ tr~ 10

*p < sf* *p < sf* *p < sf* *p < sf*

235 *tr* *tr* **2** *tr* *tr* **14**

*p* < *sf* *p* < *sf* *p* < *sf* *p* < *sf*

255 *tr* *tr* **8** *mp*

*p* < *sf* *p* < *sf* *mp*

267 **6** *tr* *p* < *sf*

*p* < *sf*

276 *tr* **2** *tr* *tr* **2**

*p* < *sf* *p* < *sf* *p* < *sf*

IV.

283  $\text{♩} = 142$   
snare  
*mf*

*mf*

289

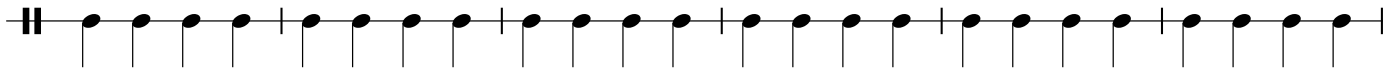
295 **4**

304

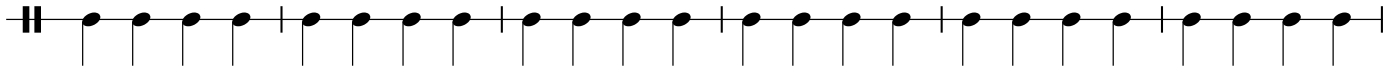
310 **35** *f*

*f*

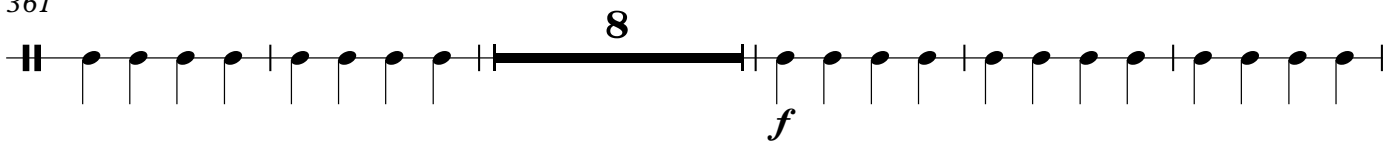
349



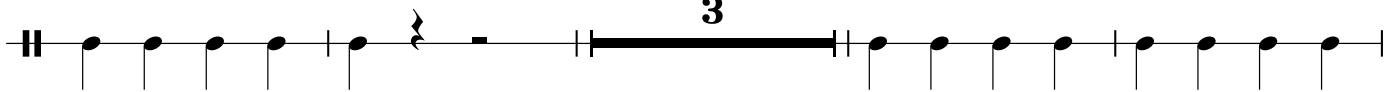
355



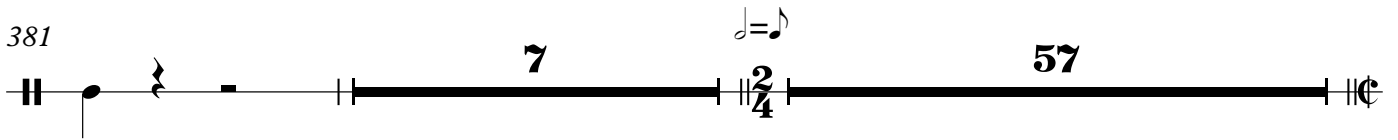
361



374

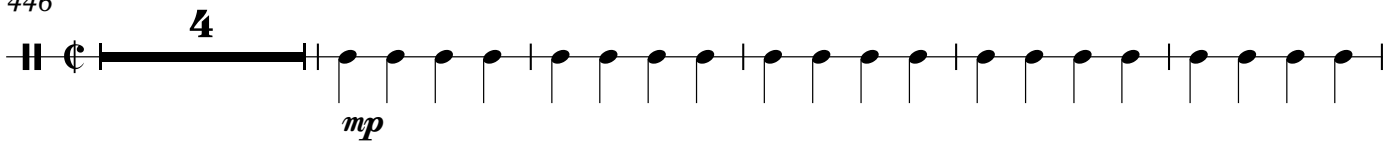


381

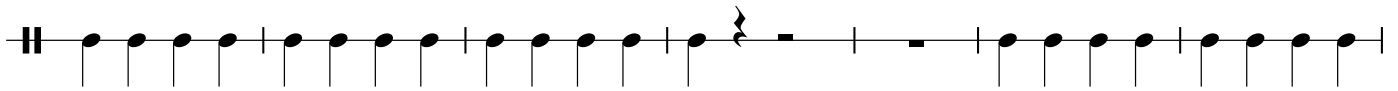


**Tempo primo**

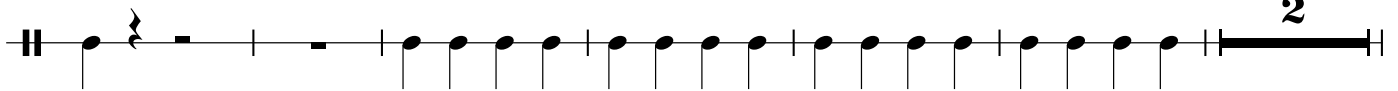
446



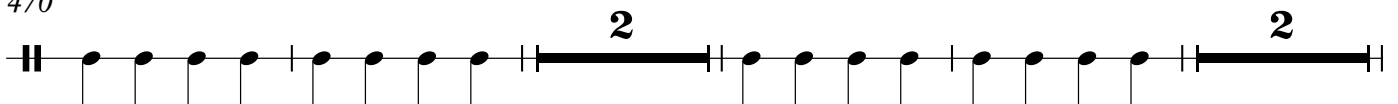
455



462



470



478

2  
*f*

485

491

497

7

508

3 2/4

514  $\text{♩} = \text{♩}$

8 **Tempo primo** 8

2/4 8 C 8

Percussion 2  
Bass Drum\Cymbal\Wood Block

# Hot Sonata

## I.

Schulhoff/Johnson

$\text{♩} = 88$

11

4/4 | 11 | 3+3+2/8 | 4/4 | 3+3+2/8 | 4/4 | 3+3+2/8

17

Poco animato

5

6

3+3+2/8 | 4/4 | 5 | 3+3+2/8 | 4/4 | 6 | 3+3+2/8 | 4/4

32

4/4 | 3+3+2/8 | 4/4 | 3+3+2/8 | 4/4 | 4/4

40

4/4 | 3+3+2/8 | 4/4 | 3+3+2/8 | 4/4 | 5 | 3+3+2/8

50

bass drum

*mp*

3+3+2/8 | 4/4 | 3+3+2/8 | 4/4 | 3+3+2/8 | 4/4

## II.

56

13

susp. cymbal, steel beater

$\text{♩} = 174$

*mp*

2

3+3+2/8 | 4/4 | 13 | 4/4 | 2 | 3/4 | 2 | 2/4 | 2

75

2/4 | 2/2 | 2 | 3/4 | 2 | 2/4 | 2/2

81

2

2

bass drum

2/2 | 2 | 3/4 | 2 | 2/4 | 3/4 | bass drum | 2/4

Percussion 2, Bass Drum\Cymbal\Wood Block

88

*mf* *p*

Measures 88-98: A sequence of measures with various time signatures (2/4, 3/4, 2/4) and rests. The first measure has a half note with an accent and *mf* dynamic. The last measure has a half note with an accent and *p* dynamic. Rehearsal marks '2' are placed above several measures.

99

*p*

Measures 99-108: A sequence of measures with various time signatures (2/4, 3/4, 2/4) and rests. The first measure has a half note with an accent and *p* dynamic. Rehearsal marks '2' are placed above several measures.

109

Measures 109-120: A sequence of measures with various time signatures (2/4, 3/4, 2/4, 2/2) and rests. Rehearsal marks '2' are placed above several measures.

121

*mp*

Measures 121-130: A sequence of measures with various time signatures (3/4, 2/4, 2/2, 3/4, 2/4, 2/2) and rests. The last measure has a dotted quarter note with *mp* dynamic. Rehearsal marks '2' are placed above several measures.

131

Measures 131-140: A sequence of measures with various time signatures (3/4, 2/4, 2/2, 3/4, 2/4, 3/4, 2/4) and rests. Rehearsal marks '2' are placed above several measures.

141

Measures 141-159: A sequence of measures with various time signatures (2/4, 3/4, 2/4, 3/4, 2/4, 2/2, 3/4, 10/4, 2/4) and rests. A rehearsal mark '10' is placed above the 10/4 measure.

160

Measures 160-172: A sequence of measures with various time signatures (2/4, 2/2, 3/4, 2/4, 2/2, 3/4, 2/4, 3/4, 2/4) and rests. Rehearsal marks '2' are placed above several measures.

173

*mf* *f*

Measures 173-183: A sequence of measures with various time signatures (2/4, 3/4, 2/4, 3/4, 2/4, 3/4, 2/4, 2/2) and rests. The first measure has a half note with an accent and *mf* dynamic. The last measure has a half note with an accent and *f* dynamic. Rehearsal marks '3' and '2' are placed above several measures.

184

Measures 184-194: A sequence of measures with various time signatures (3/4, 2/4, 2/2, 3/4, 2/4, 3/4, 2/4) and rests. Rehearsal marks '2' are placed above several measures.

195

Measures 195-204: A sequence of measures with various time signatures (2/4, 3/4, 2/4, 3/4, 2/4, 3/4, 6/4, 4/4) and rests. Rehearsal marks '2' and '6' are placed above several measures.



III.

208  $\text{♩} = 80$   
4/4 **3** **2** **2**  
*mp* *mp*

219 **2** **10**  
*mp* *mp*

235 **2** **14**  
*mp* *mp*

255 **12**  
*mp* *mp*

271 **2**  
*mp*

276 **2** **2**  
*mp*

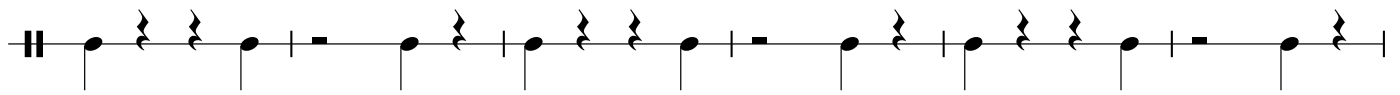
IV.

wood block  
283  $\text{♩} = 142$   
*mf*

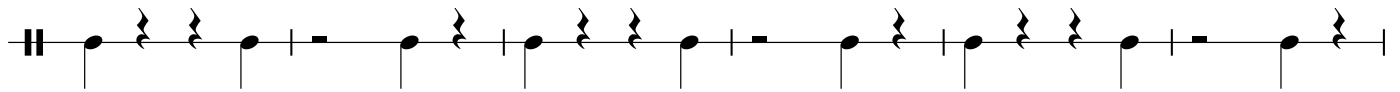
289

293 **4**

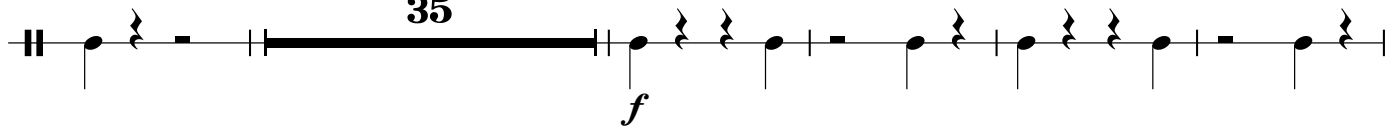
299



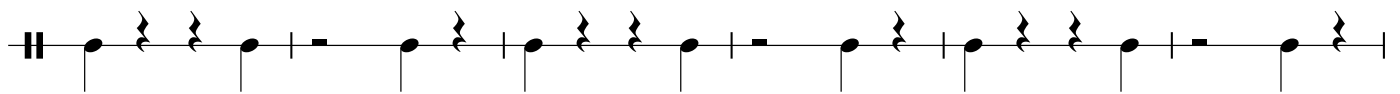
305



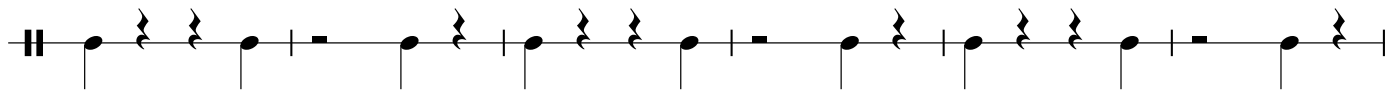
311



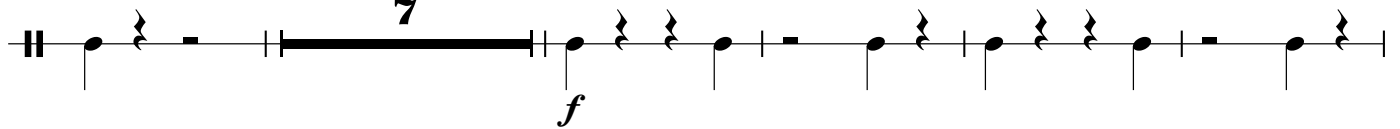
351



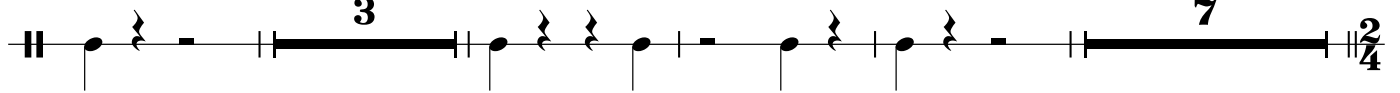
357



363

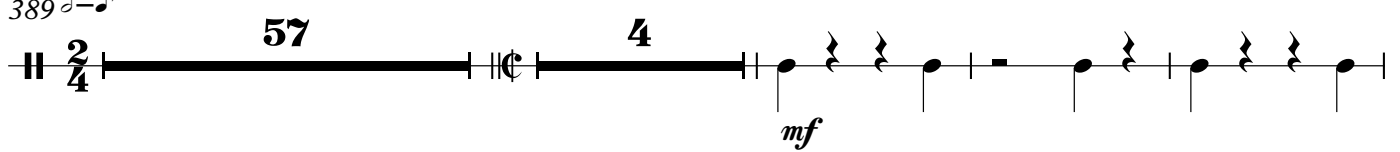


375

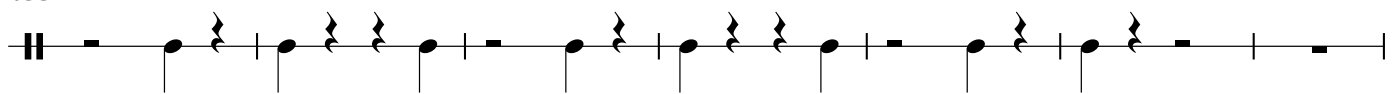


389  $\text{♩} = \text{♩}$

Tempo primo



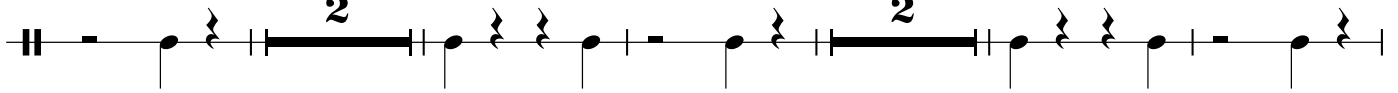
453



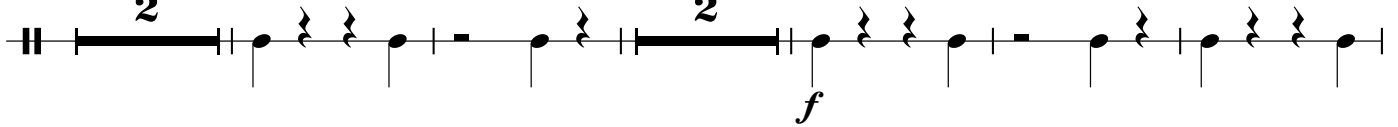
460



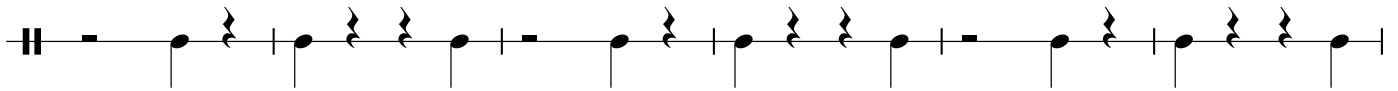
467



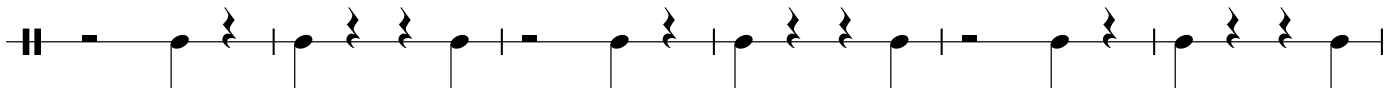
476



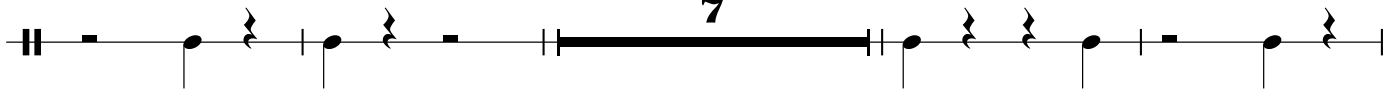
485



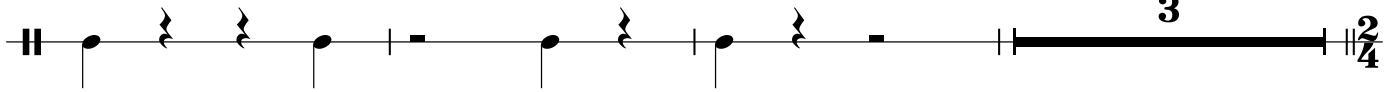
491



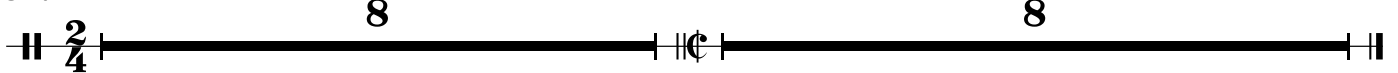
497



508



514  $\text{♩} = \text{♩}$



Tempo primo

8

8







