

# RUSSIAN SAILOR'S DANCE

OBOE I

*open part*

GLIERE

*1* **Allegro**

4 5 10 5 15 2 20 25

*f cresc.* *ff*

*14* **I Pesante** *CLAR* **III Moderato**  
Cor. ingl.

4 30 5 35 3 II 2 40 5 45 5 50

55 3 1 60 2 **IV ob. cut** 65

*p*

**V Animato** *allegro*

75

*f*

80

**VI Sostenuto poco** *molto*

85

*fz*

90 95

**VII Più tranquillo**

100

105

VIII 132

OBOE I

110 Più mosso

IX Presto

X

L.M.L.

*twinn  
Bage*

*15.*

OBOE I

XI Più mosso

150

155

160

165

*f*

*ff*

Detailed description: This block contains the first two systems of musical notation for measures 150-165. The first system starts with a dynamic marking of *f* and measure numbers 150 and 155. The second system includes measure numbers 160 and 165 and a dynamic marking of *ff*. The notation consists of a single treble clef staff with various rhythmic patterns, including eighth and sixteenth notes, and rests.

170 Prestissimo

175

180

185

190

195

200

*CF88C.*

*ff*

*sf*

Detailed description: This block contains the remaining musical notation on the page, from measure 170 to 200. It consists of five systems of a single treble clef staff. Measure numbers 175, 180, 185, 190, 195, and 200 are indicated. Dynamic markings include *CF88C.*, *ff*, and *sf*. The notation is highly rhythmic, featuring many sixteenth and thirty-second notes, with some measures containing dense sixteenth-note passages.



# RUSSIAN SAILOR'S DANCE

OBOE II

## GLIERE

**I Allegro** <sup>2</sup> 4 **5** 5 **10** 5 **15** 2 **20**

**II Pesante** 4 **30** 5 **35** 3 **II** 2 **40** 5 **45** 5

**III Moderato ff** *C. ingl.* **50** 3 *p.* 1 **60** 2

**IV Ob.** **65** **70**

**V Animato** **75** **80** **85**

**VI Sostenuto poco** **90** **95**

**VII Più tranquillo** **100**

OBOE II

105



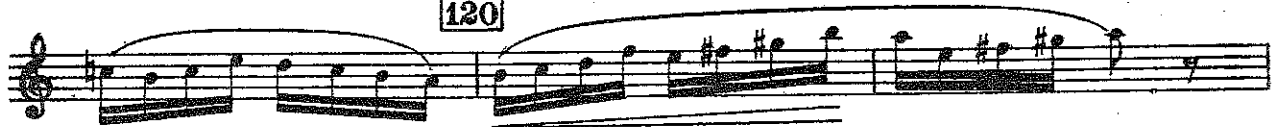
VIII 110 Più mosso



115



120



IX Presto



125



130



135



140



145

OBOE II

XI Più mosso

150

155

XII

160

165

170 Prestissimo

175

180

185

190

195

200

200

ff





Property of  
Mr. Clarence Spring

# RUSSIAN SAILOR'S DANCE

ENGLISH HORN

GLIERE

*rit* Allegro 4/4

5 10 15 2 *f* *cresc.*

20 *ff* 25

*rit* I Pesante 4/4

30 35 40 45 5

III 50 Moderato *flowing* 55 3

1 60 2 IV 65

70

V Animato 75 *f*

80

85

ENGLISH HORN

**VI** *Sostenuto poco* 90

95

**VII** *Più tranquillo* 100

105

**VIII** 110 *Più mosso*

115 120

**IX** *Presto* 125

130

**X** 135

140 145

*fast vs →*

ENGLISH HORN

XI Più mosso

150

155

XII

160 165

170 Prestissimo

175

180

185

190

195

200

