

# SYMPHONY NO. 3

For Band

STRING BASS  
(Contrabassoon)

VITTORIO GIANNINI

I

**Allegro energico**

1 *mf*

2

3

4

5

6

7

8

9

10

11

12

13

14

15

16

17

18

19

20

21

22

23

24

25

26

27

28

29

30

31

32

33

34

35

36

37

38

39

40

41

42

43

44

45

46

47

48

49

50

51

52

53

54

55

56

57

58

59

60

61

String Bass - 2

62 3 63 3 64 3 65 66 *mf*

67 *cresc.* 68 *f* 69 70 *mf* *cresc.* 71

72 *f* 73 74 75

76 *ff* 77-80 4 81-85 5 **Quieting down** 86-90 5 **Tranquillo (pochissimo meno mosso)**

91-100 10 101-103 3 104-110 7 111-115 5 *a tempo*

116 *mf* 117 118 119 120 121 122 123 *incalzando e cresc.*

124 *f a tempo* 125 126 127 128 129 130 131 *rit.*

132 *dim.* 133 134 *poco rit.* 135 **Tempo I** 136 *pp* 137-139 3

140-149 10 150-159 10 160-169 10 170-177 8 *ben ritmato*

178 *mf* 179 180-182 3 **Intensity** 183-187 5

String Bass - 3

Tempo I

188 3 189 190 191 192  
*mf* *cresc.*

193 194 195 196 197 198 199  
*ff* *> f*

200 201 202 203 unis. 204 205 206  
*ff* *f*

207 208 209 210 211 212 213 214  
*ff*

215 216 217 3 218 219 220  
*> mp* *mp*

221 3 222 223 224 225 226 227  
*f*

228 229 230 231 232 233 234 235  
*mp* *cresc.* *cresc.*

236 237 238 239 240 241 242  
*f* *cresc.* *ff* *rit.*

Tranquillo

243-247 5 248-249 2 250-259 10 260-269 10 270-278 9

279 280 281 282 283 284 285 286  
*mp* *cresc.*

287 288 289 290 291 292 293 294

String Bass - 4

295 296 297 298 **299** A little slower 300 **Tempo I** 301

302-308 **7** **309**-314 **6** 315 316 317 318

**319** 320 321 322 **A little slower** 323 324 325 326 327

328 329 330 331 332 333 334

*cresc.* *ff a tempo*

II

**Adagio** 335-344 **10** **345** 346 347-350 **4** 351

*poco rit.* *a tempo* *poco rubato*

**Religioso** 352 353-356 **4** 357-360 **4** 361 362-363 **2**

*poco rubato*

364-365 **2** **366**-367 **2** **Movendo un poco** 368-375 **8** **376**-385 **10** 386 **387**

388 389 390 391 392 393 394

*mf* *mf* *movendo cresc.* *cresc.*

395 396 **397** 398 399 400 401-403 **3**

*f intenso ed appassionato* *dim.* *poco rall.*

**Tempo I** 404-406 **3** **407** 408-416 **9** **417**-428 **11** 429

*poco rubato*

String Bass - 5

III

Allegretto

430-439

10

440

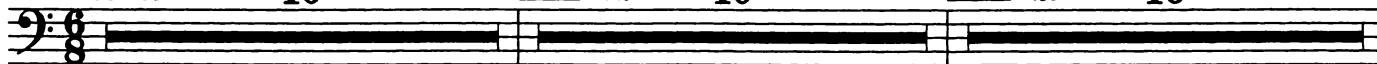
-449

10

450

-459

10



460

-469

10

470

-479

10

480

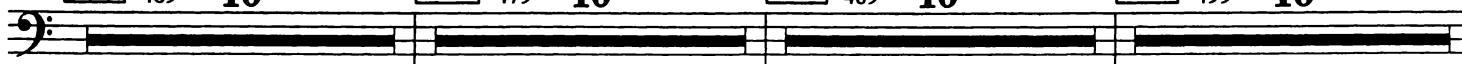
-489

10

490

-499

10



500

-509

10

510

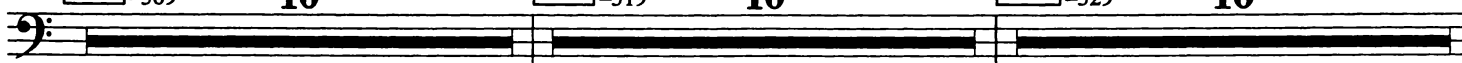
-519

10

520

-529

10



530

-539

10

540

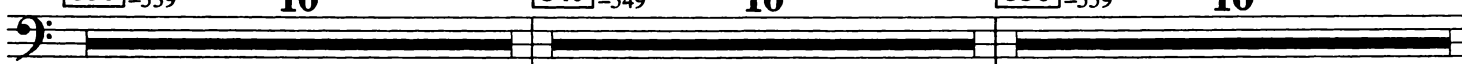
-549

10

550

-559

10



560

-569

10

570

-572

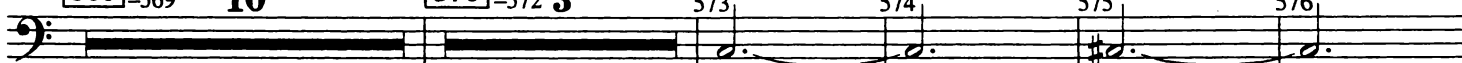
3

573

574

575

576



*f dolce*

577

578

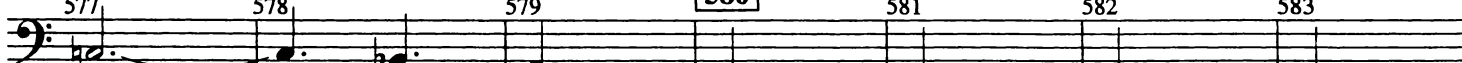
579

580

581

582

583



584

585

586

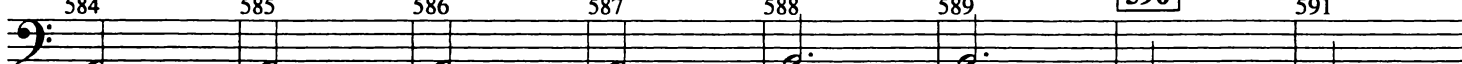
587

588

589

590

591



592

593

594

595



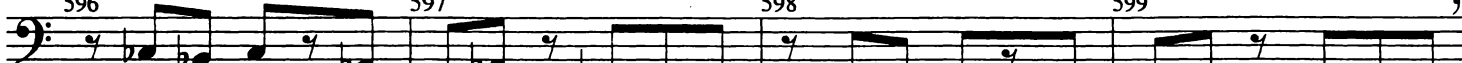
*cresc.*

596

597

598

599



*f*

600

-609

10

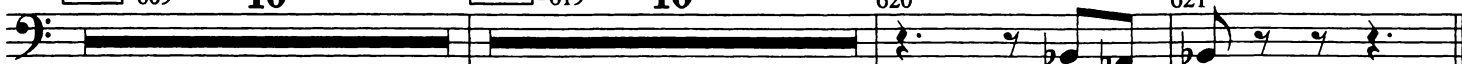
610

-619

10

620

621



*ppp*

String Bass - 6

IV

Allegro con brio

622 *f* 623 624-625 **2** 626 *mf cresc.*

627 *ff* 628-630 **3** 631 *mp* **632** *cresc.* 633

634 *f* 635 636 *f* 637

638-640 **2** 640 *mf cresc.* 641 *ff* **642**-645 **4**

646 *p* 647 *mf* 648 *p* 649 *mf* 650 *cresc.*

651 *mf* **652** 653 *ff* 654 655-656 **2**

657 658 659 660 *dim.* 661 **662 Cantabile**  
(*pochissimo meno mosso*)

663 *p* 664-665 **2** 666 *mf* 667 (quasi staccato) 668 *lightly*

669 670 671 **672** 673-675 **3**

String Bass - 7

676 *mf*

677

678

679

680

681

682

683

684

685 **Tempo I** *f*

686

687

688

689

690

691

692

693

694

695

696

697

698 *ff*

699-701 **3**

702-711 **10**

712-717 **6**

718 *p*

719 *poco cresc.*

720

721

722 *ffsf > f*

723

724 *ffsf > f*

725

726 *fp*

727

728 *mf*

729

730

731

732 *f*

733

734

735

736

737

738

739 *ff*

740 *ff*

741

742 *mf*

743

744 *f*

745-747 **3**

String Bass - 8

748 749 750 751 752  
*mp* *cresc.* *f*

753 754 755-756 **2** 757  
*ff* *ff* *mf cresc.*

758 759-761 **3** 762 763 764  
*ff* *p* *mf*

765 766 767 768 769  
*p* *mf* *cresc.* *f*

*Cantabile (Come prima)*

770 771 , 772-781 **10** 782-787 **6** 788  
*ff* *rit.*

789 790 791 792 **Tempo I** 793 794  
*a tempo* *mp* *f*

795 796 797 798 799 800 801  
*f* *sf > mf*

802 803 804 805 806 807 808  
*ff* *sf > mf* *ffsfmf* *ffsfmf*

809 810 811 812 813  
*ff* *sfmf* *mf* *cresc.*

814 815 816 817  
*f* *cresc.* *ff*

818 819 820 821 822 823