

LEÓ
WEINER
(1885 – 1960)

SUITE

on Old Hungarian Folk Themes
Op. 18

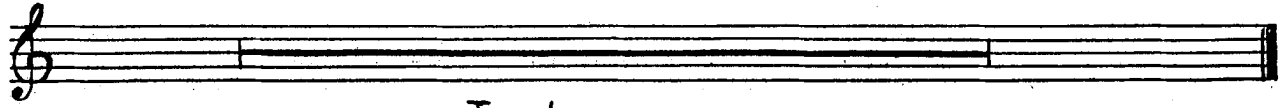
SMALL DRUM/TRIANGLE/TAM-TAM

SUITE.

Tamburo piccolo Triangolo e Tamtam

I.

LEO WEINER Op. 18.



Tacet

II.

Andante poco sostenuto

Allegro con fuoco

Clar. 6 **1** 9 **2** 4 8 **3** 8

4 8 **5** *Trambe* **2** **Triangolo** **6** 7 **1.** 1

mf

2. Fl.e.picc. **7** 6 **8** 9 Fl.e.Picc. **9** 6 **10** *tamb. picc.*

p *p* *p*

5 **11** 8 **12** 13 **13** *Triangolo* 1 2

Celli } *pizz* *p*
Bassi }

3 **4** **5** **6** **7** **8** **9** **3** **14** *Timp.* **15** 6 **16** 10

17 *Timp.* **17** *tamb. picc.* 8 **18** 3

ff=p *ff* *ff* *ff*

19 *brun.* 1 *brun.* 1 *brun.* 1 *brun.*

ff *ff* *ff*

20 **21** 12 **22** 5

ff

Tamburo piccolo
Triangolo e Tamtam

2

ff

ff

ff

Timp.

Tamb. picc.

ff

III.

Andante poco sostenuto. Pesante poco maest. Più pesante

Tamtam

Timp.

Clar. solo

Tam-tam

Klingen lassen
ppp

Tacet

VL. Solo

Tempo I.

Più pesante

Tam-tam

Tacet

ppp

ppp

Clar. solo

ppp

IV.

Tacet.

SUITE.

Piatti e Tamburo grande

I.

LEO WEINER Op. 18.

Allegro risoluto e ben marcato

2 1 2 1 1 1 1

2 6 3 1 3 4 1 1

5 1 1 4 6 4 5

7 9 8 9 12 10 9 1 1 11 5 1

2 12 7 13 Timp. 5 14 11 15 5 16 7 17 5

1 2 18 Timp. 7 19 2 1 4 1

5 20 accel. Timp. 21 Vivo 9 22 Tempol. G.P. Timp. ff

23 Piatti e Gr.C. 24 1 3 25 1

1 Piatti solo 2 26 Piatti e Gr.C. 2

ff pp *molto* ff ff

Piatti e Tamburo grande

II.

Andante poco sostenuto

Allegro con fuoco

Clar. 6 **1** 9 **2** 4 Piatti solo

Piatti e Gr. C. **3** 7 **4** 8 **5** 8 **6** 8 **7** 8

8 10 **9** 8 **10** T. picc. 8 **11** 8 **12** 13 **13** Triangolo

14 Timp. 8 2

15 6 **16** 40 **17** Timp. T. picc. 8 **18** Piatti e Gr. C. **19** **20**

21 12 **22** 5 T. picc. **23**

Piatti e Gr. C. \wedge 1 \wedge 2 \wedge 3 \wedge 4 \wedge 5 \wedge 6 \wedge 7 \wedge 8 \wedge 9 \wedge 10

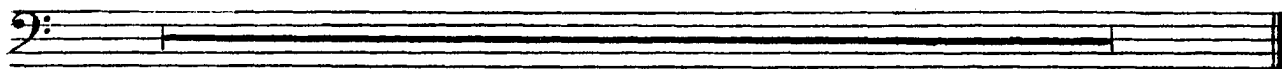
24 1 3 1 1 3

25 10 **26** 9 **27** 6 **28** 9 Piatti solo Gr. C. solo

sf *sf* *sf* *sf* *ff* *sff*

Piatti e Tamburo grande

III.



Tacet.

IV.

Presto

Musical score for Piatti e Tamburo grande, section IV. The score is written in bass clef with a 2/4 time signature. It consists of 21 numbered measures. Measure 1 is marked with a '1' above the staff. Measures 2-4 are marked with '1' above the staff. Measure 5 is marked with '5' above the staff. Measures 6-8 are marked with '1' above the staff. Measure 9 is marked with '9' above the staff. Measure 10 is marked with '10' above the staff. Measure 11 is marked with '11' above the staff. Measure 12 is marked with '12' above the staff. Measure 13 is marked with '13' above the staff. Measure 14 is marked with '14' above the staff. Measure 15 is marked with '15' above the staff. Measure 16 is marked with '16' above the staff. Measure 17 is marked with '17' above the staff. Measure 18 is marked with '18' above the staff. Measure 19 is marked with '19' above the staff. Measure 20 is marked with '20' above the staff. Measure 21 is marked with '21' above the staff. The score includes various dynamic markings: *f*, *pp*, *ff*, *dim.*, *p*, *ppp*, *mf*. It also includes performance instructions: *Piatti e Gr.C.*, *Piatti solo*, *Timp.*, *Trombe*, *G.P.*, *Cor. 6*, *Lo stesso tempo*, and *p poco a poco perdendosi*. The score is divided into measures by vertical bar lines and includes repeat signs.

Piatti e Tamburo grande

22 Piatti Gr.C.

ff sempre

6 1 2 3 4 5

23 3 4

5 6 7 8 9 10

11 12

24 1 25 1 1 1 1

perdendosi --

ppp Piatti solo G.P.

1 1 1 26 2 Piatti e Gr.C. 27 5 28 12

ff *pp* *ff* Timp.

1 29 FL.solo 30 2 1 3 31 6 32 8 33 Timp. 6 34 5

ff

Piatti e Gr.C.

3 2 2 35

Timp. *ff* G.P. *ff* *p* *ff*

p *ff* *p* *ff* *p* *ff* *p*

36

ff *p* *sff* *sff* *sff* *sff* *sff* *ff*

37

38 1 6

sff *sff* *sff* *sff* *sff*