

Hector Villa-Lobos

5 Preludes

arranged for string quartet by M Viljoen

Violoncello

Prelude No. 1

H Villa-Lobos arr M Viljoen

Andantino espressivo

mp

9

mf > p

19

pp p accel. f

26

rit. a tempo mp f rit.

33

a tempo accel. rit.

39

a tempo mp

45

mp

52

f pizz. arco pizz. arco p

Violoncello

2

61 pizz. arco pizz. arco rit. .

69 1. pizz. Poco meno 2.

78 a tempo 4

86

94 accel.

104 rit. a tempo

111 accel. rit.

118 a tempo

125

Violoncello

Prelude No. 2

H Villa-Lobos arr M Viljoen

Andante **rit.**

10 *p* **a tempo** *leggero* 6

19 *f* *f*

30 **Piu mosso** *mf* *mp*

42 *f* *p*

56 *mf* *pp* *mp*

69 *f* *p* *mf*

79 *p* **sul pont.** *f* *pp* **norm.**

88 **rit.** **Tempo I** *p*

100 *f*

110 *f*

Prelude No.3

Violoncello

H Villa-Lobos arr M Viljoen

Adagio



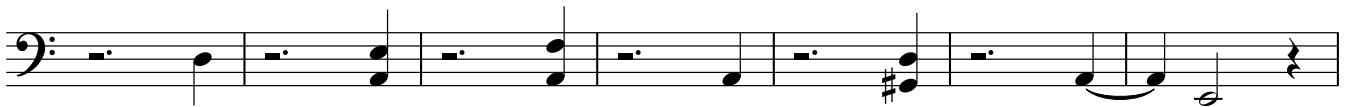
8



16



23 **Molto adagio e dolorido**



30



Prelude No.4

Violoncello

H Villa-Lobos arr M Viljoen

Lento

pp

5

f cantabile

11

Animato
sul pont.

p *f* *p*

17

f *p*

22

rit. - - - - - norm.

f *p* *f*

27

Lento

28

II II

34

pp *f cantabile*

38

f pizz.

Violoncello

Prelude No.5

H Villa-Lobos arr M Viljoen

Allegro

5

9

13

17

21

25

29

33

33 **Piu mosso**

Measures 33-36: Bass clef, key signature of two sharps (F# and C#). Measure 33 starts with a forte (*f*) dynamic. The music features eighth and sixteenth notes with slurs and ties.

Measures 37-39: Bass clef, key signature of two sharps. Measure 37 begins with a double bar line and a fermata. The music continues with eighth and sixteenth notes.

Measures 40-42: Bass clef, key signature of two sharps. Measure 40 contains a first ending bracket with a first ending (1.) and a second ending (2.). Measure 41 features a triplet of eighth notes. The piece concludes with a double bar line and a key signature change to one sharp (F#).

Measures 43-46: Bass clef, key signature of one sharp (F#). Measure 43 starts with a mezzo-forte (*mf*) dynamic. The music consists of quarter notes with slurs.

Measures 47-50: Bass clef, key signature of one sharp. The music continues with quarter notes and rests.

Measures 51-54: Bass clef, key signature of one sharp. The music features quarter notes with slurs and ties.

Measures 55-58: Bass clef, key signature of one sharp. Measure 55 begins with a pizzicato (*pizz.*) dynamic. The music includes quarter notes with slurs and ties.