

Alla cara nipotina Maria Grazia Gandini

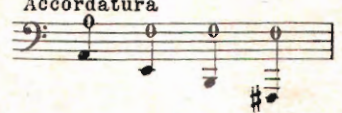
ITALO CAIMMI

DUE PEZZI

(DAI "VENTI STUDI DI TECNICA SUPERIORE,,)

a) BARCAROLA

Accordatura



Allegretto tranquillo

CONTRABBASSO

con Sordina



Un poco mosso
a tempo

rall.

con dolcezza

p



Armonici



I. Tempo



rall. sino alla fine



b) GAVOTTA

Accordatura



CONTRABBASSO

Allegretto

Musical score for Contrabasso, featuring ten staves of music. The score includes various dynamics such as *mf*, *f*, *ff*, and *cresc.*, along with performance markings like *opp. 8 sotto* and *II*. The music is written in bass clef with a key signature of one flat (B-flat) and a 2/4 time signature. The piece concludes with a double bar line and a final *f* dynamic marking.

First staff of music in bass clef, starting with a key signature of one flat (B-flat). It features a series of eighth and sixteenth notes with slurs and accents. Dynamic markings include *mf* and *f*. A fermata is placed over a note in the second measure.

Second staff of music, continuing the melodic line with similar rhythmic patterns and slurs. Dynamic marking is *mf*.

Third staff of music, showing a change in dynamics with *mf*, *f*, and *mf* markings. It includes several slurs and accents.

Fourth staff of music, featuring a more active melodic line with slurs and accents. Dynamic marking is *mf*.

Fifth staff of music, including a key signature change to two flats (B-flat and E-flat). It contains slurs, accents, and a dynamic marking of *mf*.

Sixth staff of music, continuing the piece with slurs and accents. Dynamic marking is *mf*.

Seventh staff of music, featuring a key signature change to two sharps (F# and C#). It includes slurs, accents, and dynamic markings of *f*.

Eighth staff of music, with a dynamic marking of *f* and a *cresc:* (crescendo) instruction indicated by a dotted line.

Ninth staff of music, featuring a key signature change to one sharp (F#). It includes slurs, accents, and a dynamic marking of *mf*.

Tenth staff of music, concluding the page with slurs, accents, and a dynamic marking of *f*.